



COURSE OVERVIEW RE0010 Professional Maintenance Auditor

Course Title

Professional Maintenance Auditor

Course Date/Venue

June 28-July 02, 2026/TBA Meeting Room, Cristal Amaken Hotel, Riyadh, KSA

Course Reference

RE0010

Course Duration/Credits

Five days/3.0 CEUs/30 PDHs

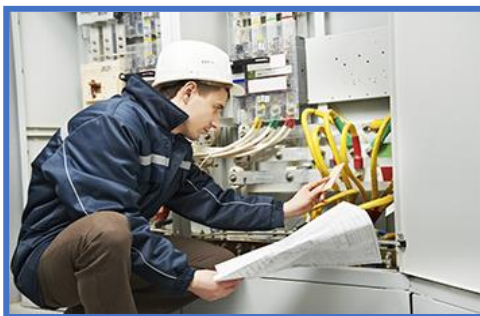


Course Description



This practical and highly-interactive course includes real-life case studies and exercises where participants will be engaged in a series of interactive small groups and class workshops.

Recent competitive trends have been pushing companies to reconsider the impact and importance of increasing equipment availability, utilization and resource utilization, and increasing quality and responsiveness of maintenance services in achieving World Class Status to meet world competition.



It has been estimated that of the over 600 billion dollars per year spent on maintenance, more than one third 200 billion dollars is wasted! Wasted due to poor management of resources, poor measurement and control of labor, material, capital! Not only that: Maintenance costs are higher than managers realize, because although they think the costs of doing maintenance are high, they don't often realize the costs of not doing maintenance right are even higher.



Perhaps as much as 15 to 40 percent of total product cost (due to the 'hidden, costs such as breakdowns, lost production, lost time, late delivery, disorder, poor quality, high rework)! Think about it, most managers think of maintenance as a cost, a necessary evil.





Costs are something to be minimized, even eliminated, if possible. But everyone knows you can't eliminate maintenance. The plant would come to a screeching halt. No, you must optimize the maintenance function, not minimize it. But to optimize maintenance means you must develop more meaningful, contribution-based measurements.

This comprehensive course will show you how to initiate and sustain a process of maintenance performance improvement; a process in which maintenance is recognized as critical to the overall production strategy by which your plant provides the product to the customer at a quality he wants and a price they are willing to pay.

This course is devoted to helping you understand how to improve performance through more effective measurement systems such as Auditing and Benchmarking. Here's a road map to get you from where you are to where you need to be! Here are some practical guidelines, tools, and techniques that will enable maintenance and production managers to develop consistent, useful, and relevant measures of performance as they strive for 'world class' status.

The course includes an e-book entitled "*Maintenance Benchmarking and Best Practices*", published by McGraw-Hill Professional, which will be given to the participants to help them appreciate the principles presented in the course.

Course Objectives/Outcomes & Benefits for the Participants

Upon the successful completion of this course, each participant will be able to:-

- Get certified as a "*Professional Maintenance Auditor*"
- Apply and gain an in-depth knowledge and skills in maintenance auditing, benchmarking, and performance improvement towards world-class status
- Carryout maintenance benchmarking and best practices by developing the scoreboard for maintenance excellence
- Measure overall equipment effectiveness, improve craft labor productivity and provide significant gained value
- Use performance measures as feedback to enhance planning, estimating and scheduling
- Develop maintenance excellence index and apply maintenance planning, estimating, scheduling and materials management
- Employ inventory management best practices and illustrate cycle counting
- Implement maintenance planning, estimating and scheduling and identify the role of maintenance and operations in world-class organizations
- Define the terms mentioned in ISO 9001:2008 including the maintenance key performance indicators in accordance with BS EN 15341 standard
- Recognize the evaluation criteria for reliability-centered maintenance processes as per SAE JA 1011



Exclusive Smart Training Kit - H-STK®



Participants of this course will receive the exclusive “Haward Smart Training Kit” (H-STK®). The H-STK® consists of a comprehensive set of technical content which includes **electronic version** of the course materials conveniently saved in a **Tablet PC**.

Who Should Attend

This course provides an overview of all significant aspects and considerations of maintenance auditing, benchmarking and performance improvement towards world class for maintenance managers, superintendents, engineers and supervisors who realize the power of performance measurement to motivate, coordinate, and achieve the overall goals and objectives of their company, plant, or department. Line or staff maintenance or production, mid-level or executive, every attendee will benefit from this imminently practical workshop approach to establishing meaningful measures of maintenance performance.

Training Methodology

All our Courses are including **Hands-on Practical Sessions** using equipment, State-of-the-Art Simulators, Drawings, Case Studies, Videos and Exercises. The courses include the following training methodologies as a percentage of the total tuition hours:-

- 30% Lectures
- 20% Practical Workshops & Work Presentations
- 30% Hands-on Practical Exercises & Case Studies
- 20% Simulators (Hardware & Software) & Videos

In an unlikely event, the course instructor may modify the above training methodology before or during the course for technical reasons.

Learning Design & Customization

This course can be customized to the exact requirements of clients. Haward Technology is so proud of our huge capabilities in tailoring our courses to the training needs of our valued clients.

Accommodation

Accommodation is not included in the course fees. However, any accommodation required can be arranged at the time of booking.

Training Fee

US\$ 6,000 per Delegate + **VAT**. This rate includes H-STK® (Haward Smart Training Kit), buffet lunch, coffee/tea on arrival, morning & afternoon of each day.



Course Certificate(s)

(1) Internationally recognized Competency Certificates and Plastic Wallet Cards will be issued to participants who completed a minimum of 80% of the total tuition hours and successfully passed the exam at the end of the course. Successful candidate will be certified as a "Professional Maintenance Auditor". Certificates are valid for 5 years.

Recertification is FOC for a Lifetime.

Sample of Certificates

The following are samples of the certificates that will be awarded to course participants:-





- (2) Official Transcript of Records will be provided to the successful delegates with the equivalent number of ANSI/IACET accredited Continuing Education Units (CEUs) earned during the course

* Haward Technology * CEUs * Haward Technology * CEUs * Haward Technology * CEUs * Haward Technology *



Haward Technology Middle East
Continuing Professional Development (HTME-CPD)

CEUs
Page 1 of 1

CEU Official Transcript of Records

TOR Issuance Date: 20-Sep-18
HTME No. PAR10475
Participant Name: Abdullah Al Hammadi

Program Ref.	Program Title	Program Date	No. of Contact Hours	CEU's
RE0010	Professional Maintenance Auditor	September 16-20, 2018	30	3.0

Total No. of CEU's Earned as of TOR Issuance Date **3.0**

TRUE COPY


 Maricel De Guzman
 Academic Director

Haward Technology has been approved as an Authorized Provider by the International Association for Continuing Education and Training (IACET), 1760 Old Meadow Road, Suite 500, McLean, VA 22102, USA. In obtaining this approval, Haward Technology has demonstrated that it complies with the ANSI/IACET 1-2013 Standard which is widely recognized as the standard of good practice internationally. As a result of their Authorized Provider membership status, Haward Technology is authorized to offer IACET CEUs for programs that qualify under the ANSI/IACET 1-2013 Standard.

Haward Technology's courses meet the professional certification and continuing education requirements for participants seeking Continuing Education Units (CEUs) in accordance with the rules & regulations of the International Association for Continuing Education & Training (IACET). IACET is an international authority that evaluates programs according to strict, research-based criteria and guidelines. The CEU is an internationally accepted uniform unit of measurement in qualified courses of continuing education.

Haward Technology is accredited by











P.O. Box 26070, Abu Dhabi, United Arab Emirates | Tel.: +971 2 3091 714 | Fax: +971 2 3091 716 | E-mail: info@haward.org | Website: www.haward.org

* Haward Technology * CEUs * Haward Technology * CEUs * Haward Technology * CEUs * Haward Technology *




Certificate Accreditations

Haward's certificates are accredited by the following international accreditation organizations:

- 
British Accreditation Council (BAC)

Haward Technology is accredited by the **British Accreditation Council for Independent Further and Higher Education** as an **International Centre**. Haward's certificates are internationally recognized and accredited by the British Accreditation Council (BAC). BAC is the British accrediting body responsible for setting standards within independent further and higher education sector in the UK and overseas. As a BAC-accredited international centre, Haward Technology meets all of the international higher education criteria and standards set by BAC.

- 
The International Accreditors for Continuing Education and Training (IACET - USA)

Haward Technology is an Authorized Training Provider by the International Accreditors for Continuing Education and Training (IACET), 2201 Cooperative Way, Suite 600, Herndon, VA 20171, USA. In obtaining this authority, Haward Technology has demonstrated that it complies with the **ANSI/IACET 2018-1 Standard** which is widely recognized as the standard of good practice internationally. As a result of our Authorized Provider membership status, Haward Technology is authorized to offer IACET CEUs for its programs that qualify under the **ANSI/IACET 2018-1 Standard**.

Haward Technology's courses meet the professional certification and continuing education requirements for participants seeking **Continuing Education Units (CEUs)** in accordance with the rules & regulations of the International Accreditors for Continuing Education & Training (IACET). IACET is an international authority that evaluates programs according to strict, research-based criteria and guidelines. The CEU is an internationally accepted uniform unit of measurement in qualified courses of continuing education.

Haward Technology Middle East will award **3.0 CEUs** (Continuing Education Units) or **30 PDHs** (Professional Development Hours) for participants who completed the total tuition hours of this program. One CEU is equivalent to ten Professional Development Hours (PDHs) or ten contact hours of the participation in and completion of Haward Technology programs. A permanent record of a participant's involvement and awarding of CEU will be maintained by Haward Technology. Haward Technology will provide a copy of the participant's CEU and PDH Transcript of Records upon request.



Course Instructor(s)

This course will be conducted by the following instructor(s). However, we have the right to change the course instructor(s) prior to the course date and inform participants accordingly:



Mr. Andrew Ladwig is a **Senior Mechanical & Maintenance Engineer** with over **25 years** of extensive experience within the **Oil & Gas, Refinery, Petrochemical & Power** industries. His expertise widely covers in the areas of **Maintenance Optimization & Best Practices, Process Plant Shutdown & Turnaround, Maintenance Auditing & Benchmarking, Reliability Management, Reliability Centered Maintenance Principles & Application, Efficient Shutdowns, Machinery Lubrication, Maintenance Planning & Scheduling, Coupling & Shaft Alignment Techniques, Maintenance Auditing & Benchmarking, Reliability Management, Reliability Centered Maintenance Principles & Application, Efficient Shutdowns, Machinery Lubrication, Maintenance Planning & Scheduling, Coupling & Shaft Alignment Techniques, Reliability, Availability & Maintainability (RAM), Root Cause Analysis, Maintenance Process, Reliability-Centered Maintenance (RCM), Reliability Engineering Analysis (RE), Root Cause Analysis (RCA), Asset Integrity Management (AIM), Reactive & Proactive Maintenance, Pressure Safety Relief Valve Repair & Recalibration, PSV/PRV Troubleshooting, PRV Testing & Repair, Valve Testing & Inspection, Valve Sealing, Valve Calibration, Control Valves & Actuators, Boiler Inspection & Maintenance, Boiler Systems, Boiler instrumentation & Controls, Boiler Start-up & Shutdown, Boiler Operation & Steam System Management, Boiler Water Chemistry & Treatment, Boiler Efficiency & Waste Heat Recovery, Boiler Inspection & Testing, Boiler Maintenance, Boiler Troubleshooting & Safety, Boiler Emissions & Pollution Control, Combustion Analysis & Tuning Procedures, Water Treatment Technology, Heat Recovery Steam Generating (HRSG), Impulse Tube Installation & Inspection, Parker Compression Fittings, Pipes & Fittings, PSV Inspection, Root Cause Failure Analysis, Tank Design & Engineering, Tank Shell, Tanks & Tank Farms, Vacuum Tanks, Gas Turbine Operating & Maintenance, Reciprocating & Centrifugal Compressors, Screw Compressor, Compressor Control & Protection, Gas & Steam Turbines, Turbine Operations, Gas Turbine Technology, Valves, Process Control Valves, Bearings & Lubrication and Advanced Machinery Dynamics.**

During his career life, Mr. Ladwig has gained his practical experience through his various significant positions and dedication as the **Mechanical Engineer, Project Engineer, Reliability & Maintenance Engineer, Maintenance Support Engineer, Process Engineer, HSE Supervisor, Warehouse Manager, Quality Manager, Business Analyst, Senior Process Controller, Process Controller, Safety Officer, Mechanical Technician, Senior Lecturer and Senior Consultant/Trainer** for various companies such as the Sasol Ltd., Sasol Wax, Sasol Synfuels, just to name a few.

Mr. Ladwig has a **Bachelor's** degree in **Chemical Engineering** and a **Diploma in Mechanical Engineering**. Further, he is a **Certified Instructor/Trainer, a Certified Internal Verifier/Assessor/Trainer** by the **Institute of Leadership & Management (ILM)** and has delivered various trainings, workshops, seminars, courses and conferences internationally.





Course Program

The following program is planned for this course. However, the course instructor(s) may modify this program before or during the course for technical reasons with no prior notice to participants. Nevertheless, the course objectives will always be met:

Day 1: Sunday, 28th of June 2026

0730 - 0800	Registration & Coffee
0800 - 0815	Welcome & Introduction
0815 - 0830	PRE-TEST
0830 - 0930	Maintenance Benchmarking & Best Practices: Developing Your Scoreboard for Maintenance Excellence World Class Organizations • Framework for Maintenance Excellence • The Continuous Improvement Process • People Really Interested in Developing Excellence in Maintenance • Today's Maintenance Challenges • Facing Today's Maintenance Challenges • Continuous Reliability Improvement • The Reliability Pyramid • Profit & Customer Centered Maintenance
0930 - 0945	Break
0945 - 1115	Maintenance Benchmarking & Best Practices: Developing Your Scoreboard for Maintenance Excellence (cont'd) What is an Internal Audit? • The Auditing Process • Audit Approaches • The Main Steps of the Generic Auditing Process • Red, Amber, Green Status (RAG Status) • Spider/Radar Charts • Improving Productivity of People Resources • Productivity
1115 - 1145	Measuring Overall Equipment Effectiveness (OEE) Overall Equipment Effectiveness Concepts • The Eight Major Losses • The Eight Major Losses: Measuring of Results • Overall Equipment Effectiveness (OEE)
1145 - 1230	Measuring & Improving Craft Labor Productivity OCE Measures Craft Productivity • Baseline Cost for Examples of Gained Value from Craft Productivity Improvement • Calculating Craft Utilization • What is Your Wrench Time? • Improving Craft Utilization
1230 - 1245	Break
1245 - 1305	Measuring & Improving Craft Labor Productivity (cont'd) Measuring Your Craft Utilization • Work Sampling • Track Non-Productive Work by Type • Calculating Craft Performance • Craft Service Quality
1305 - 1420	Bottom Line: Improving Craft Labour Productivity can Provide Significant Gained Value Planning for Maintenance Excellence • Measuring Maintenance Excellence • Maintenance Benchmarking and Best Practices • The Scoreboard for Maintenance Excellence • The Scoreboard for Maintenance Excellence: Key Steps to Continuous Reliability Improvement • The Scoreboard for Facilities Management Excellence
1420 - 1430	Recap Using this Course Overview, the Instructor(s) will Brief Participants about the Topics that were Discussed Today and Advise Them of the Topics to be Discussed Tomorrow
1430	Lunch & End of Day One

Day 2: Monday, 29th of June 2026

0730 - 0930	Bottom Line: Improving Craft Labour Productivity Can Provide Significant Gained Value (cont'd) Approach for Assessment of the Total Maintenance Operation • Selecting the Right Metrics and Key Performance Indicators for Your Maintenance Operation • Performance Indicators • What are Key Performance Indicators • Performance Indicator Characteristics and Requirements • Key Performance Indicators
-------------	--





0930 – 0945	Break
0945 – 1230	Bottom Line: Improving Craft Labour Productivity Can Provide Significant Gained Value (cont'd) What is Benchmarking? • Benchmarking vs KPI's • Performance Parameter Hierarchy • Work Management KPI's • Types of Measurements • Maintenance Effectiveness KPI's
1230 – 1245	Break
1245 – 1310	Using Performance Measures as Feedback to Enhance Planning, Estimating & Scheduling Maintenance Performance Metrics
1310 – 1420	Developing Your Maintenance Excellence Index The Maintenance Excellence Index • CMMS System Outputs • Key Benefits of CMMS • CMMS Packages
1420 – 1430	Recap Using this Course Overview, the Instructor(s) will Brief Participants about the Topics that were Discussed Today and Advise Them of the Topics to be Discussed Tomorrow
1430	Lunch & End of Day Two

Day 3: Tuesday, 30th of June 2026

0730 – 0925	Developing Your Maintenance Excellence Index (cont'd) The CMMS Benchmarking System • Automatic Identification • The Maintenance Excellence Institute (TMEI) • The ACE Team Benchmarking Process
0925 – 0940	Break
0940 – 1010	Maintenance Planning, Estimating & Scheduling & Materials Management Improving Productivity of People Resources • Maintenance Planning, Estimating & Scheduling Provides Gained Value • The Planner/Scheduler's Role • Ensuring Your Maintenance Storeroom Supports the Planning Process • What is Inventory Management? • Primary Responsibility for Customer Satisfaction • Materials Management
1010 – 1135	Inventory Management Best Practices Where are you Now? • Where you Need to be • ABC Inventory Analysis • Security and Warehouse Access • Establish an Approved Stock List • Assign and Use Bin Locations • Record All Stock Withdrawals • Process All Transactions Quickly • Have Objectives for Purchasing • Know Cost of Bad Inventory Management • Maintain Accurate Stock Balances • Establish Best Replenishment Path • Establish Reorder Guidelines • Define Replenishment Procedures • Establish Performance Goals • Attack Slow Moving/Dead Inventory • Effective Strategic Planning
1135 – 1220	Cycle Counting: How It Can Work for You Cycle Counting • Key Problems with Cycle Counting • Key Steps for Cycle Counting • Guidelines for Cycle Counting • Geographic Method • Ranking Method of Cycle Counting • Pareto (ABC) Analysis • Cycle Counting Guidelines
1220 – 1235	Break
1235 – 1345	Inventories: How Much Do We Really Need? Performance Measures • Inventory Turnover • Inventory Turnover Example • Inventory Turnover Formula • Customer Service • Vendor Performance • Excess Inventory Reduction • Inventory Accuracy • Get Maximum Value from Your Maintenance Storeroom • Planning for your Maintenance Storeroom • Planning & Scheduling will Improve Craft Labor Productivity • Planning & Scheduling will Improve Craft Labor Productivity • The Planning/Scheduling Process (5 phases) • Organizing and Managing a Maintenance Planning and Scheduling Process • Roles and Responsibilities





1345 – 1420	Maintenance Planning, Estimating & Scheduling Maintenance Supervisor • Maintenance Engineering • Maintenance Planner/Scheduler • Requirements for an Effective Maintenance Planning and Scheduling Process • Planner/Scheduler Selection & Key Roles Responsibilities • Good Planning Starts with a Good Planner • Factors Influencing Number of Planners (Planner to Craft Ratio) • Duties of a Maintenance Planner • Some Things a Planner Should not do
1420 – 1430	Recap Using this Course Overview, the Instructor(s) will Brief Participants about the Topics that were Discussed Today and Advise Them of the Topics to be Discussed Tomorrow
1430	Lunch & End of Day Three

Day 4: Wednesday, 01st of July 2026

0730 – 0930	Maintenance Planning, Estimating & Scheduling (cont'd) Backlog Management • Valid Priority System • Steps for an Effective Planning Process • Criteria of a Planned Job • What Work Orders to be Planned and How Much Planning is Enough • Informational Support-The Maintenance Technical Library • Screening Work Requests • Evaluating the Job for Scope of Work • Job Assessment and Scoping Checklist • Total Planned Time for Scheduling Purposes
0930 – 0945	Break
0945 – 1100	Maintenance Planning, Estimating & Scheduling (cont'd) Detailed Planning and Breakdown of Job Steps • Job Preparation & the Planned Job Package • Getting Feedback on the Job Plan • Coordinating Equipment Access, Permitting, Safety and Compliance Issues • An Important Partnership for Effective Planned Maintenance • Responsibilities of the Planner/Scheduler to the Materials Management Process • Maintenance Storeroom • Materials Management's Support to Proactive, Planned Maintenance • Key Procedures for Effective Scheduling • Job Loading
1100 – 1245	Maintenance Planning, Estimating & Scheduling (cont'd) Job Scheduling • Labor Deployment Plan • Key Guidelines for Completing the Scheduling Process • Do not Schedule a Job Until All of these Things are in Place • Supervisor Responsibility for Job Execution • Handling Schedule Adjustments • The Morning Meeting • Job Close Out and Follow Up • Schedule Compliance • Reasons for Schedule Non-Compliance
1245 – 1300	Break
1300 – 1420	The Role of Maintenance & Operations in World-Class Organizations What is Maintenance? • The Evolution of Maintenance • Downtime versus Repair Time • The Four Stages of Maintenance • Types of Maintenance • Predictive Maintenance (PdM) • Statistical Analysis of Equipment Failure Data • Data Analysis • Reliability Availability and Maintainability (RAM) • What is Total Productive Maintenance (TPM)? • A Total Productive Maintenance (TPM) Definition • Another TPM Definition • TPM Principles • The Eight Major Pillars of TPM • Operator Autonomous Maintenance • Key Operation Success Factors • QESH or QUENSH: Quality, Environment, Safety & Health
1420 – 1430	Recap Using this Course Overview, the Instructor(s) will Brief Participants about the Topics that were Discussed Today and Advise Them of the Topics to be Discussed Tomorrow
1430	Lunch & End of Day Four

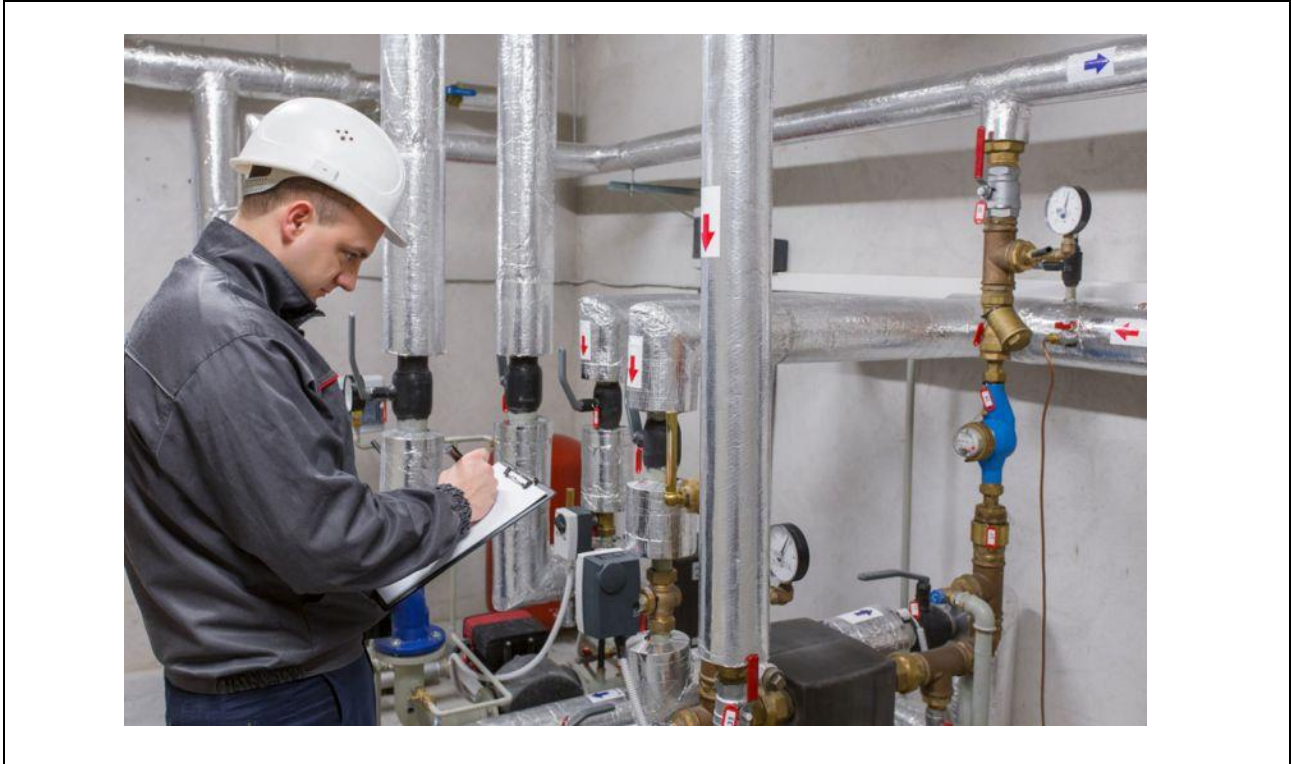


Day 5: Thursday, 02nd of July 2026

0730 – 0930	ISO 9001: 2008 in Simple Terms ISO 9001:2008 Made Simple • ISO 9001:2008 and Other Elements of the IMS are Based on the Methodology Known as PDCA (Plan-Do-Check-Act) • Process Basics • Reliability Centered Maintenance (RCM) • Functional Failure • Categories of Functional Failures • Failure Mode Types
0930 – 0945	Break
0945 – 1030	ISO 9001: 2008 in Simple Terms (cont'd) The Failure Process • RCM – The Analytical Decision Logic • RCM – The Functional Block Diagram • Maintenance Tasks • MSG3 Decision Logic
1030 – 1130	Maintenance Key Performance Indicators BS EN 15341 Standard Why Measure? • Introduction • What are KPIs? • Scope • Terms & Definitions • Maintenance Performance • System of Indicators • Objectives • Architecture of Key Indicators • Economic Key Indicators • Technical Key Indicators • Organizational Indicators
1130 – 1145	Break
1145 – 1230	Maintenance Key Performance Indicators BS EN 15341 Standard (cont'd) Methodology for the Selection & Use of Key Performance Indicators • Desirable Characteristics of KPIs • Defining the Objectives • Selecting the Relevant Indicators • Selecting Indicators • Defining, Collecting the Basic Data • Calculating the Indicators • Type of Presentation • Test and Validation • Analysis of the Results • Assessing KPI Usefulness
1230 – 1300	Evaluation Criteria for Reliability-Centered Maintenance Processes SAE JA 1011 Definition • Reliability-Centered Maintenance • Information to be gathered
1300 – 1315	Course Conclusion Using this Course Overview, the Instructor(s) will Brief Participants about the Course Topics that were Covered During the Course
1315 – 1415	COMPETENCY EXAM
1415 – 1430	Presentation of Course Certificates
1430	Lunch & End of Course

Practical Sessions

This practical and highly-interactive course includes real-life case studies and exercises:-



Book(s)

As part of the course kit, the following e-book will be given to all participants:

Title : Maintenance Benchmarking and Best Practices
ISBN : 978-0071463393
Author : Ralph Peters
Publisher : McGraw-Hill Professional

Course Coordinator

Mari Nakintu, Tel: +971 2 30 91 714, Email: mari1@haward.org