

COURSE OVERVIEW IE0780 Compressor Control & Protection

Course Title

Compressor Control & Protection

Course Date/Venue

December 15-19, 2024/TBA, Radisson Blu Sisli, Turkey

Course Reference

IE0780

Course Duration/Credits

Five days/3.0 CEUs/30 PDHs



Course Description



This practical and highly-interactive course includes various practical sessions and exercises. Theory learnt will be applied using our state-of-the-art simulators.



This course is designed to provide delegates with a detailed and up-to-date overview of compressor control and protection. It covers the various types of compressors and their functions; the characteristics of surge including its consequences; the key aspects of compressor control and anti-surge protection and preventions; and the various applications of advanced compressor control and how to control using loop decoupling.



The course will also discuss the effects of operating conditions and improves knowledge on surge curve plotting methods; the turbine control objectives and principles according to actuator speed kW droop control; and the turbine system availability objectives and the correct level of redundancy.

During this interactive course, participants will learn to apply several integrated turbine and compressor control approaches as well as the technology updates and distinguish the functions of various control and protection devices in relation to internal relief valve, internal motor temperature sensors and crankcase heaters.



Course Objectives

Upon the successful completion of this course, each participant will be able to:-

- Apply and gain an in-depth knowledge on compressor control and protection
- Identify the various types of compressors as well as their functions
- Determine the characteristics of surge including its consequences
- Employ the key aspects of compressor control and anti-surge protection and preventions
- Recognize the various applications of advanced compressor control and train how to control using loop decoupling
- Illustrate the effects of operating conditions and improves knowledge on surge curve plotting methods
- Implement the turbine control objectives and principals according to actuator speed and kW droop control
- Recognize the turbine system availability objectives and choose the correct level of redundancy
- Apply several integrated turbine and compressor control approaches as well as the technology updates
- Distinguish the functions of various control and protection devices in relation to internal relief valve, internal motor temperature sensors, and crankcase heaters

Who Should Attend

This course provides an overview of all significant aspects and considerations of compressor control and protection for engineers and other technical and operation staff who are responsible for the implementation and efficient operation, control and protection of compressors.

Training Methodology

All our Courses are including **Hands-on Practical Sessions** using equipment, State-of-the-Art Simulators, Drawings, Case Studies, Videos and Exercises. The courses include the following training methodologies as a percentage of the total tuition hours:-

30% Lectures

20% Practical Workshops & Work Presentations

30% Hands-on Practical Exercises & Case Studies

20% Simulators (Hardware & Software) & Videos

In an unlikely event, the course instructor may modify the above training methodology before or during the course for technical reasons.

Course Certificate(s)


Internationally recognized certificates will be issued to all participants of the course who completed a minimum of 80% of the total tuition hours.





Certificate Accreditations


Certificates are accredited by the following international accreditation organizations

- 
The International Accreditors for Continuing Education and Training (IACET - USA)

Haward Technology is an Authorized Training Provider by the International Accreditors for Continuing Education and Training (IACET), 2201 Cooperative Way, Suite 600, Herndon, VA 20171, USA. In obtaining this authority, Haward Technology has demonstrated that it complies with the **ANSI/IACET 2018-1 Standard** which is widely recognized as the standard of good practice internationally. As a result of our Authorized Provider membership status, Haward Technology is authorized to offer IACET CEUs for its programs that qualify under the **ANSI/IACET 2018-1 Standard**.

Haward Technology’s courses meet the professional certification and continuing education requirements for participants seeking **Continuing Education Units (CEUs)** in accordance with the rules & regulations of the International Accreditors for Continuing Education & Training (IACET). IACET is an international authority that evaluates programs according to strict, research-based criteria and guidelines. The CEU is an internationally accepted uniform unit of measurement in qualified courses of continuing education.

Haward Technology Middle East will award **3.0 CEUs** (Continuing Education Units) or **30 PDHs** (Professional Development Hours) for participants who completed the total tuition hours of this program. One CEU is equivalent to ten Professional Development Hours (PDHs) or ten contact hours of the participation in and completion of Haward Technology programs. A permanent record of a participant’s involvement and awarding of CEU will be maintained by Haward Technology. Haward Technology will provide a copy of the participant’s CEU and PDH Transcript of Records upon request.

- 
British Accreditation Council (BAC)

Haward Technology is accredited by the **British Accreditation Council** for **Independent Further and Higher Education** as an **International Centre**. BAC is the British accrediting body responsible for setting standards within independent further and higher education sector in the UK and overseas. As a BAC-accredited international centre, Haward Technology meets all of the international higher education criteria and standards set by BAC.

Course Fee

US\$ 6,000 per Delegate + **VAT**. This rate includes Participants Pack (Folder, Manual, Hand-outs, etc.), buffet lunch, coffee/tea on arrival, morning & afternoon of each day.

Accommodation

Accommodation is not included in the course fees. However, any accommodation required can be arranged at the time of booking.





Course Instructor(s)

This course will be conducted by the following instructor(s). However, we have the right to change the course instructor(s) prior to the course date and inform participants accordingly:



Dr. Ahmed El-Sayed, PhD, MSc, BSc, is a **Senior Electrical & Instrumentation Engineer** with over **35 years** of extensive experience in the **Power, Petroleum, Petrochemical and Utilities**. He specializes in **HV/LV Equipment, High Voltage Electrical Safety, LV & HV Electrical System, HV Equipments Inspection, Maintenance, HV Switchgear Operation & Maintenance, LV Distribution Switchgear & Equipment, HV Switchgear Maintenance, HV/LV Electrical Authorisation, Hazardous Area Classification, Power Quality, Disturbance Analysis, Blackout, Power Network, Power Distribution, Power Systems Control, Power Systems Security, Power Electronics, ETAP, Electrical Substations, Tariff Design, Structure Analysis, Engineering Drawings, Codes & Standards, P&ID Reading Interpretation & Developing, PLC, SCADA, DCS, Process Control, Instrumentation Automation, Power Generation, Process Control Instrumentation, SIS, SIL, ESD, Alarm Management Systems, Fieldbus Systems and Fiber Optics** as well as the service pricing these. He is currently the **Systems Control Manager** of **Siemens** where he is in-charge Security & Control of **Power Transmission Distribution & High Voltage** Systems and further takes part in the Load Records Evaluation & Transmission Services Pricing.

During his career life, Dr. Ahmed has been actively involved in different Power System Activities including Roles in Power System Planning, Analysis, Engineering, **HV Substation Design, Electrical Service Pricing, Evaluations & Tariffs, Project Management** and also Teaching and Consulting. His vast industrial experience was honed greatly when he joined many International and National Companies such as **Siemens, Electricity Authority and ACETO** industries where he focused more on dealing with Technology Transfer, System Integration Process and Improving Localization. He was further greatly involved in manufacturing some of **Power System and Control & Instrumentation Components** such as Series of Digital Protection **Relays, MV VFD, PLC and SCADA** System with intelligent features.

Dr. Ahmed is well-versed in different electrical and instrumentation fields like Load Management Concepts, **PLC Programming, Installation, Operation and Troubleshooting, AC Drives Theory, Application and Troubleshooting, Industrial Power Systems Analysis, AC & DC Motors, Electric Motor Protection, DCS SCADA, Control and Maintenance Techniques, Industrial Intelligent Control System, Power Quality Standards, Power Generators and Voltage Regulators, Circuit Breaker and Switchgear Application and Testing Techniques, Transformer and Switchgear Application, Grounding for Industrial and Commercial Assets, Power Quality and Harmonics, Protective Relays (O/C Protection, Line Differential, Bus Bar Protection and Breaker Failure Relay)** and Project Management Basics (PMB).

Dr. Ahmed has **PhD, Master's & Bachelor's** degree in **Electrical and Instrumentation Engineering** from the **University of Wisconsin Madison, USA**. Further, he has numerous papers published internationally in the areas of Power Quality, Superconductive Magnetic Energy Storage, SMES role in Power Systems, Power System **Blackout** Analysis, and Intelligent Load Shedding Techniques for preventing Power System Blackouts, **HV Substation Automation** and Power System Stability.



Course Program

The following program is planned for this course. However, the course instructor(s) may modify this program before or during the course for technical reasons with no prior notice to participants. Nevertheless, the course objectives will always be met:

Day 1: Sunday, 15th of December 2024

0730 – 0800	Registration & Coffee
0800 – 0815	Welcome & Introduction
0815 – 0830	PRE-TEST
0830 – 0930	Overview of Compressors General Types • Centrifugal Compressors • Axial Compressors
0930 – 0945	Break
0945 – 1145	Overview of Surge Surge versus Stall • Static Instability • Dynamic Instability • Characteristics of Surge • Consequences of Surge
1145 – 1230	Compressor Control Introduction & Principals Defining Compressor Surge and its Consequences • Anti-Surge Protection and Prevention • Surge Detection and Recovery • Compressor Control • Performance Control
1230 – 1245	Break
1245 – 1420	Case Studies
1420 – 1430	Recap Using this Course Overview, the Instructor(s) will Brief Participants about the Topics that were Discussed Today and Advise Them of the Topics to be Discussed Tomorrow
1430	Lunch & End of Day One

Day 2: Monday, 16th of December 2024

0730 – 0930	Advanced Compressor Control The Surge Parameter • Changing Parameter Considerations • Compressor Loadsharing • Anti-Surge Control Challenges and Solutions • Train Control Using Loop Decoupling
0930 – 0945	Break
0945 – 1100	Effect of Operating Conditions Surge Curve Plotting Method • Suction Pressure • Suction Temperature • Molecular Weight • Specific Heat Ratio
1100 – 1230	Effect of Operating Conditions (cont'd) Compression Ratio • Speed • Vane Position
1230 – 1245	Break
1245 – 1420	Case Studies
1420 – 1430	Recap Using this Course Overview, the Instructor(s) will Brief Participants about the Topics that were Discussed Today and Advise Them of the Topics to be Discussed Tomorrow
1430	Lunch & End of Day Two

Day 3: Tuesday, 17th of December 2024

0730 – 0930	Turbine Control Objectives & Principals Speed Control • Actuator Interface and Control • Speed and kW Droop Control • Header Pressure Control
0930 – 0945	Break



0945 – 1100	Turbine Control System Availability Objectives System Reliability and Availability Basics
1100 – 1230	Turbine Control System Availability Objectives (cont'd) Choosing the Correct Level of Redundancy • Control Philosophy Considerations (Integration, Distribution, etc.)
1230 – 1245	Break
1245 – 1420	Case Studies
1420 – 1430	Recap Using this Course Overview, the Instructor(s) will Brief Participants about the Topics that were Discussed Today and Advise Them of the Topics to be Discussed Tomorrow
1430	Lunch & End of Day Three

Day 4: Wednesday, 18th of December 2024

0730 – 0930	Integrated Turbine & Compressor Control Approaches DCS, PLC, and Dedicated Controller Philosophies • Compressor-Loop Response Analysis-How Fast is Fast Enough?
0930 – 0945	Break
0945 – 1100	Integrated Turbine & Compressor Control Approaches (cont'd) Case Study: Control Recursion Rates and their Effect on Performance
1100 – 1230	Integrated Turbine & Compressor Control Approaches (cont'd) Technology Update: Upcoming Technologies in Turbine Control
1230 – 1245	Break
1245 – 1420	Case Studies
1420 – 1430	Recap Using this Course Overview, the Instructor(s) will Brief Participants about the Topics that were Discussed Today and Advise Them of the Topics to be Discussed Tomorrow
1430	Lunch & End of Day Four

Day 5 Thursday, 19th of December 2024

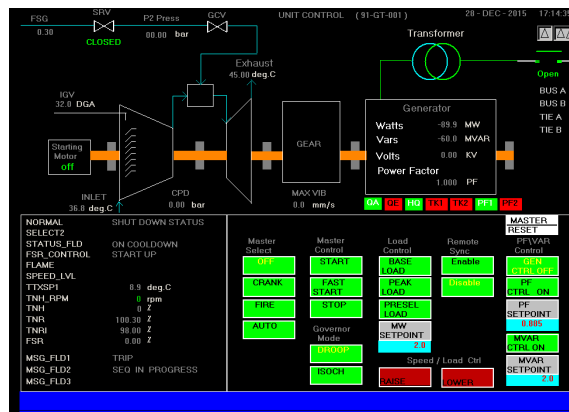
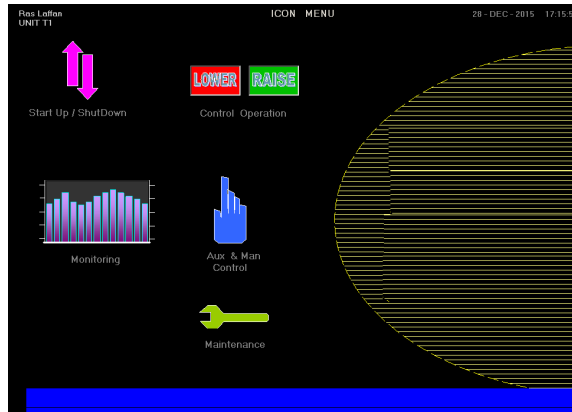
0730 – 0830	Control & Protection Devices High and Low Pressure Controls • Oil Failure Control • Internal Relief Value
0830 – 0930	Control & Protection Devices (cont'd) Motor Starters and Overload • Internal Motor Temperature Sensors • Crankcase Heaters
0930 – 0945	Break
0945 – 1215	Practical Sessions
1215 – 1230	Break
1230 – 1345	Practical Sessions (cont'd)
1345 – 1400	Course Conclusion Using this Course Overview, the Instructor(s) will Brief Participants about the Course Topics that were Covered During the Course
1400 – 1415	POST-TEST
1415 – 1430	Presentation of Course Certificates
1430	Lunch & End of Course

Simulator (Hands-on Practical Sessions)

Practical session will be organized during the course for delegates to practice the theory learnt. Delegates will be provided with an opportunity to carryout various exercises using our state-of-the-art simulators “SIM 3300 Centrifugal Compressor”, “CBT on Compressors” and “MARK V” video simulator.

SIM 3300 Centrifugal Compressor Simulator

CBT on Compressors



Course Coordinator

Mari Nakintu, Tel: +971 2 30 91 714, Email: mari1@haward.org

