



COURSE OVERVIEW DE0251(AD6)

Production Operations in the Oil & Gas Fields & Surface Facilities

Operation of Process Equipment, Separation of Oil/Gas/Water, Controlling Flow/Pressure/Temperature, Injection of Water/Gas & Process Troubleshooting

Course Title

Production Operations in the Oil & Gas Fields & Surface Facilities: *Operation of Process Equipment, Separation of Oil/Gas/Water, Controlling Flow/Pressure/Temperature, Injection of Water/Gas & Process Troubleshooting*

Course Date/Venue

Please see page 3

Course Reference

DE0251(AD6)



Course Duration/Credits

Five days/3.0 CEUs/30 PDHs

Course Description



This practical and highly-interactive course includes various practical sessions and exercises. Theory learnt will be applied using our state-of-the-art simulators.



This course is designed to provide participants with an up-to-date overview of the production operations in the oil and gas fields and surface facilities covering the operation of process equipment, separation of oil/gas/water, controlling flow/pressure/temperature, injection of water/gas and process troubleshooting. It aims to establish an understanding of the processes, technology, equipment, techniques and HSE associated with oil and gas production and operation.



The course covers the different eras of petroleum industry; the similarities and differences of upstream and downstream O&G; the function, operation and equipment of the wellhead tower; the purpose, equipment and uses of production manifold; the well construction; the vertical, deviated and horizontal wells; the well completion consisting of casing design, fracturing, perforating, acid stimulation, sand control, coiled tubing operations and logging; and the processes involved in the separation of oil, gas and water.

During this interactive course, participants will learn the oil and gas production streams, their flows and pressure; the methods of controlling flow, pressure and temperature; the flow assurance covering paraffin, wax, scale, asphaltenes, corrosion and erosion; the types and purpose of production equipment including the need, operations and equipment of artificial lift; the electrical submersible pumps, gas lift and progressive cavity pumps for heavy oil; the water and gas injection technology; and the proper waterflooding and troubleshooting.

Course Objectives

Upon the successful completion of this course, each participant will be able to:-

- Apply and gain an in-depth knowledge on the operation of process equipment, separation of oil/gas/water, controlling flow/pressure/temperature, injection of water/gas and process troubleshooting
- Differentiate upstream versus downstream O&G and discuss the function, operation and equipment of the wellhead tower
- Recognize the purpose, equipment and uses of production manifold
- Illustrate well construction as well as the vertical, deviated and horizontal wells completion design
- Identify the well completion consisting of casing design, fracturing, perforating, acid stimulation, sand control, coiled tubing operations and logging
- Carryout the processes involved in the separation of oil, gas and water
- Discuss the oil and gas production streams, their flows and pressure
- Employ the methods of controlling flow, pressure and temperature
- Explain flow assurance covering paraffin, wax, scale, asphaltenes, corrosion and erosion
- Identify the types and purpose of production equipment including the need, operation and equipment of artificial lift
- Recognize electrical submersible pumps, gas lift and progressive cavity pumps for heavy oil
- Explain water and gas injection technology and employ proper waterflooding and troubleshooting

Exclusive Smart Training Kit - H-STK®



*Participants of this course will receive the exclusive “Haward Smart Training Kit” (H-STK®). The H-STK® consists of a comprehensive set of technical content which includes **electronic version** of the course materials conveniently saved in a **Tablet PC**.*

Who Should Attend

This course provides an overview of the various operations in oil and gas surface production facilities for engineers and other technical staff working in the oil and gas fields. The course is also suitable for engineers and other technical staff who are not working in the oil and gas field but willing to have an introductory knowledge on the subject.

Course Date/Venue

Session(s)	Date	Venue
1	April 13-17, 2026	Salon Expo, NH Hotel Plaza de Armas, Seville, Spain
2	April 26-30, 2026	Meeting Plus 9, City Centre Rotana, Doha, Qatar
3	May 25-29, 2026	Ruben Boardroom, The Rubens at The Palace, Buckingham Palace Road, London, United Kingdom
4	July 19-23, 2026	Pierre Lotti Meeting Room, Movenpick Hotel Istanbul Golden Horn, Istanbul, Turkey
5	August 16-20, 2026	Meeting Room 4, Four Seasons Hotel Cairo at Nile Plaza, Corniche El Nil, Garden City, Cairo, Egypt
6	October 18-22, 2026	Meeting Plus 9, City Centre Rotana, Doha, Qatar
7	December 06-10, 2026	Tamra Meeting Room, Al Bandar Rotana Creek, Dubai, UAE
8	January 10-15, 2027	Salon Expo, NH Hotel Plaza de Armas, Seville, Spain
9	March 28-April 01, 2027	Meeting Room 4, Four Seasons Hotel Cairo at Nile Plaza, Corniche El Nil, Garden City, Cairo, Egypt

Course Fee


Doha	US\$ 8,500 per Delegate. This rate includes H-STK® (Haward Smart Training Kit), buffet lunch, coffee/tea on arrival, morning & afternoon of each day.
Istanbul	US\$ 8,500 per Delegate + VAT . This rate includes H-STK® (Haward Smart Training Kit), buffet lunch, coffee/tea on arrival, morning & afternoon of each day.
Dubai	US\$ 8,000 per Delegate + VAT . This rate includes H-STK® (Haward Smart Training Kit), buffet lunch, coffee/tea on arrival, morning & afternoon of each day.
London	US\$ 8,800 per Delegate + VAT . This rate includes H-STK® (Haward Smart Training Kit), buffet lunch, coffee/tea on arrival, morning & afternoon of each day.
Seville	US\$ 8,800 per Delegate + VAT . This rate includes H-STK® (Haward Smart Training Kit), buffet lunch, coffee/tea on arrival, morning & afternoon of each day.
Cairo	US\$ 8,000 per Delegate + VAT . This rate includes H-STK® (Haward Smart Training Kit), buffet lunch, coffee/tea on arrival, morning & afternoon of each day.

Course Certificate(s)

Internationally recognized certificates will be issued to all participants of the course who completed a minimum of 80% of the total tuition hours.

Certificate Accreditations

Haward's certificates are accredited by the following international accreditation organizations: -

- 
British Accreditation Council (BAC)

Haward Technology is accredited by the **British Accreditation Council** for **Independent Further and Higher Education** as an **International Centre**. Haward's certificates are internationally recognized and accredited by the British Accreditation Council (BAC). BAC is the British accrediting body responsible for setting standards within independent further and higher education sector in the UK and overseas. As a BAC-accredited international centre, Haward Technology meets all of the international higher education criteria and standards set by BAC.

- 
The International Accreditors for Continuing Education and Training (IACET - USA)

Haward Technology is an Authorized Training Provider by the International Accreditors for Continuing Education and Training (IACET), 2201 Cooperative Way, Suite 600, Herndon, VA 20171, USA. In obtaining this authority, Haward Technology has demonstrated that it complies with the **ANSI/IACET 2018-1 Standard** which is widely recognized as the standard of good practice internationally. As a result of our Authorized Provider membership status, Haward Technology is authorized to offer IACET CEUs for its programs that qualify under the **ANSI/IACET 2018-1 Standard**.

Haward Technology's courses meet the professional certification and continuing education requirements for participants seeking **Continuing Education Units (CEUs)** in accordance with the rules & regulations of the International Accreditors for Continuing Education & Training (IACET). IACET is an international authority that evaluates programs according to strict, research-based criteria and guidelines. The CEU is an internationally accepted uniform unit of measurement in qualified courses of continuing education.

Haward Technology Middle East will award **3.0 CEUs** (Continuing Education Units) or **30 PDHs** (Professional Development Hours) for participants who completed the total tuition hours of this program. One CEU is equivalent to ten Professional Development Hours (PDHs) or ten contact hours of the participation in and completion of Haward Technology programs. A permanent record of a participant's involvement and awarding of CEU will be maintained by Haward Technology. Haward Technology will provide a copy of the participant's CEU and PDH Transcript of Records upon request.

Accommodation

Accommodation is not included in the course fees. However, any accommodation required can be arranged at the time of booking.

Course Instructor(s)

This course will be conducted by the following instructor(s). However, we have the right to change the course instructor(s) prior to the course date and inform participants accordingly:



Mr. Konstantin Zorbalas, MSc, BSc, is a **Senior Petroleum Engineer & Well Completions Specialist** with over **30 years** of **offshore** and **onshore** experience in the **Oil & Gas, Refinery & Petrochemical** industries. His wide expertise includes **Workovers & Completions, Petroleum Risk & Decision Analysis, Acidizing Application in Sandstone & Carbonate, Well Testing Analysis, Stimulation Operations, Reserves Evaluation, Reservoir Fluid Properties, Reservoir Engineering & Simulation Studies, Reservoir Monitoring, Artificial Lift Design, Gas Operations, Workover/Remedial Operations & Heavy Oil Technology, Applied Water Technology, Oil & Gas Production, X-mas Tree & Wellhead Operations & Testing, Artificial Lift Systems (Gas Lift, ESP, and Rod Pumping), Well Cementing, Production Optimization, Production Operations, Well Completion Design, Sand Control, PLT Correlation, Slickline Operations, Acid Stimulation, Well testing, Production Logging, Project Evaluation & Economic Analysis**. Further, he is actively involved in **Project Management** with special emphasis in production technology and field optimization, performing conceptual studies, economic analysis with risk assessment and field development planning. He is currently the **Senior Petroleum Engineer & Consultant** of **National Oil Company** wherein he is involved in the mega-mature fields in the Arabian Gulf, predominantly carbonate reservoirs; designing the acid stimulation treatments with post-drilling rigless operations; utilizing CT with tractors and DTS systems; and he is responsible for gas production and preparing for reservoir engineering and simulation studies, well testing activities, field and reservoir monitoring, production logging and optimization and well completion design.

During his career life, Mr. Zorbalas worked as a **Senior Production Engineer, Well Completion Specialist, Production Manager, Project Manager, Technical Manager, Technical Supervisor & Contracts Manager, Production Engineer, Production Supervisor, Production Technologist, Technical Specialist, Business Development Analyst, Field Production Engineer and Field Engineer**. He worked for many world-class oil/gas companies such as **ZADCO, ADMA-OPCO, Oilfield International Ltd, Burlington Resources** (later acquired by **Conoco Phillips**), **MOBIL E&P, Saudi Aramco, Pluspetrol E&P SA, Wintershall, Taylor Energy, Schlumberger, Rowan Drilling and Yukos EP** where he was in-charge of the **design and technical analysis** of a gas plant with capacity **1.8 billion m3/yr gas**. His achievements include **boosting oil production 17.2% per year** since 1999 using **ESP and Gas Lift systems**.

Mr. Zorbalas has **Master's** and **Bachelor's** degree in **Petroleum Engineering** from the **Mississippi State University, USA**. Further, he is an **SPE Certified Petroleum Engineer, Certified Instructor/Trainer, a Certified Internal Verifier/Assessor/Trainer** by the **Institute of Leadership & Management (ILM)**, an active member of the **Society of Petroleum Engineers (SPE)** and has numerous scientific and technical publications and delivered innumerable training courses, seminars and workshops worldwide.

Training Methodology

All our Courses are including **Hands-on Practical Sessions** using equipment, State-of-the-Art Simulators, Drawings, Case Studies, Videos and Exercises. The courses include the following training methodologies as a percentage of the total tuition hours:-

- 30% Lectures
- 20% Practical Workshops & Work Presentations
- 30% Hands-on Practical Exercises & Case Studies
- 20% Simulators (Hardware & Software) & Videos

In an unlikely event, the course instructor may modify the above training methodology before or during the course for technical reasons.

Course Program

The following program is planned for this course. However, the course instructor(s) may modify this program before or during the course for technical reasons with no prior notice to participants. Nevertheless, the course objectives will always be met:

Day 1

0730 – 0800	<i>Registration & Coffee</i>
0800 – 0815	<i>Welcome & Introduction</i>
0815 – 0830	PRE-TEST
0830 – 0930	<i>Introduction to the Petroleum Industry</i> <i>History of the Different Eras</i>
0930 – 0945	<i>Break</i>
0945 – 1100	<i>Upstream versus Downstream O&G</i> <i>Similarities and Differences</i>
1100 – 1230	<i>The Function, Operation & Equipment of the Wellhead Tower</i>
1230 – 1245	<i>Break</i>
1245 – 1420	<i>Production Manifold</i> <i>Purpose • Equipment • Uses</i>
1420 - 1430	<i>Recap</i> <i>Using this Course Overview, the Instructor(s) will Brief Participants about the Topics that were Discussed Today and Advise Them of the Topics to be Discussed Tomorrow</i>
1430	<i>Lunch & End of Day One</i>

Day 2

0730 – 0930	<i>Well Construction Overview</i>
0930 – 0945	<i>Break</i>
0945 – 1045	<i>Completion Design</i> <i>Vertical • Deviated • Horizontal Wells</i>
1045 – 1230	<i>Overview of the Well Completion</i> <i>Casing Design • Fracturing • Perforating • Acid Stimulation • Sand Control • Coiled Tubing Operations • Logging</i>
1230 – 1245	<i>Break</i>
1245 – 1420	<i>Separation of Oil, Gas & Water</i>
1420 - 1430	<i>Recap</i> <i>Using this Course Overview, the Instructor(s) will Brief Participants about the Topics that were Discussed Today and Advise Them of the Topics to be Discussed Tomorrow</i>
1430	<i>Lunch & End of Day Two</i>



Day 3

0730 – 0930	The Oil & Gas Production Streams, Their Flows & Pressure
0930 – 0945	Break
0945 – 1045	Methods of Controlling Flow, Pressure & Temperature
1045 – 1230	Flow Assurance Paraffin • Wax • Scale • Asphaltenes • Corrosion • Erosion
1230 – 1245	Break
1245 – 1420	Type & Purpose of Production Equipment
1420 - 1430	Recap Using this Course Overview, the Instructor(s) will Brief Participants about the Topics that were Discussed Today and Advise Them of the Topics to be Discussed Tomorrow
1430	Lunch & End of Day Three

Day 4

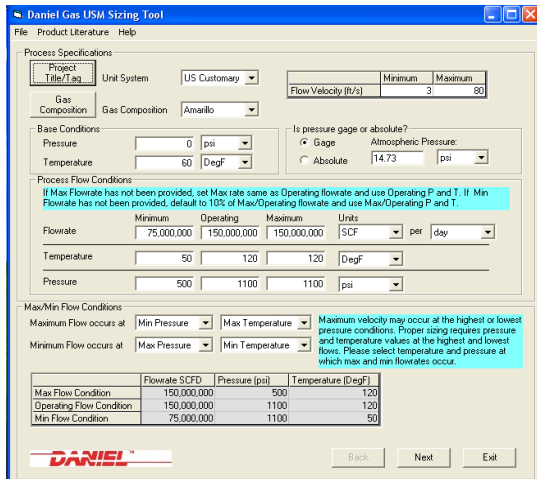
0730 – 0930	Introduction to Artificial Lift Need • Operations • Equipment
0930 – 0945	Break
0945 – 1045	Electrical Submersible Pumps
1045 – 1230	Gas Lift
1230 – 1245	Break
1245 – 1420	Progressive Cavity Pumps for Heavy Oil
1420 - 1430	Recap Using this Course Overview, the Instructor(s) will Brief Participants about the Topics that were Discussed Today and Advise Them of the Topics to be Discussed Tomorrow
1430	Lunch & End of Day Four

Day 5

0730 – 0930	Water & Gas Injection Technology
0930 – 0945	Break
0945 – 1045	Waterflooding Methods • Equipment
1045 – 1230	Waterflooding (cont'd) Processes
1230 – 1245	Break
1245 – 1345	Troubleshooting Process • Pump Failure Analysis
1345 – 1400	Course Conclusion Using this Course Overview, the Instructor(s) will Brief Participants about the Course Topics that were Covered During the Course
1400 – 1415	POST-TEST
1415 – 1430	Presentation of Course Certificates
1430	Lunch & End of Course

Simulator (Hands-on Practical Sessions)

Practical sessions will be organized during the course for delegates to practice the theory learnt. Delegates will be provided with an opportunity to carryout various exercises using our state-of-the-art “Gas Ultrasonic Meter Sizing Tool”, “Liquid Turbine Meter and Control Valve Sizing Tool”, “Liquid Ultrasonic Meter Sizing Tool”, “Orifice Flow Calculator” “Centrifugal Pumps and Troubleshooting Guide 3.0”, “SIM 3300 Centrifugal Compressor”, “CBT on Compressors” and, “Heat Exchanger Tube Layout” simulators.



Daniel Gas USM Sizing Tool

File Product Literature Help

Process Specifications

Project Title / Tag: [] Unit System: US Customary [] Minimum: [] Maximum: []

Gas Composition: [] Gas Composition: Anasilo [] Flow Velocity (ft/s): []

Base Conditions

Pressure: [] psi [] To pressure gage or absolute? [] Gage [] Absolute [] Atmospheric Pressure: []

Temperature: [] DegF []

Process Flow Conditions

If Max Flowrate has not been provided, set Max rate same as Operating flowrate and use Operating P and T. If Min Flowrate has not been provided, default to 10% of Max/Operating flowrate and use Max/Operating P and T.

Flowrate: [] Minimum: [] Operating: [] Maximum: [] Units: [] per [] day []

Temperature: [] 50 [] 120 [] 120 DegF []

Pressure: [] 500 [] 1100 [] 1100 psi []

Max/Min Flow Conditions

Maximum Flow occurs at [] Min Pressure [] Max Temperature [] Maximum velocity may occur at the highest or lowest pressure conditions. Proper sizing requires pressure and temperature values at the highest and lowest flows. Please select temperature and pressure at which max and min flowrates occur.

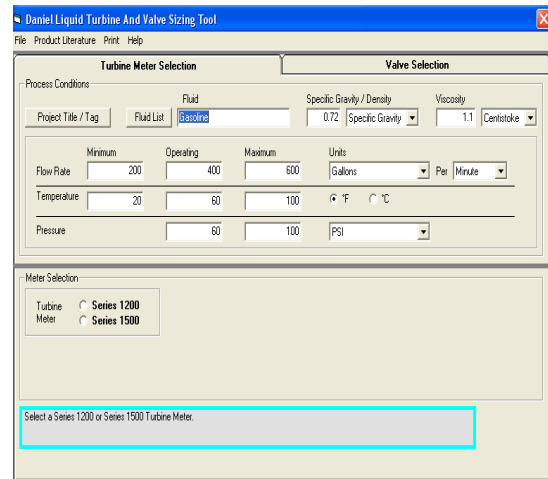
Minimum Flow occurs at [] Max Pressure [] Min Temperature []

	Flowrate SCFD	Pressure (psi)	Temperature (DegF)
Max Flow Condition	150,000,000	500	120
Operating Flow Condition	150,000,000	1100	120
Min Flow Condition	75,000,000	1100	50

DANIEL

Back Next Exit

Gas Ultrasonic Meter (USM) Sizing Tool Simulator



Daniel Liquid Turbine And Valve Sizing Tool

File Product Literature Print Help

Turbine Meter Selection Valve Selection

Process Conditions

Project Title / Tag: [] Fluid List: [] Specific Gravity / Density: [] Viscosity: []

Flow Rate: [] Minimum: [] Operating: [] Maximum: [] Units: [] Per [] Minute []

Temperature: [] 20 [] 60 [] 100 °F °C []

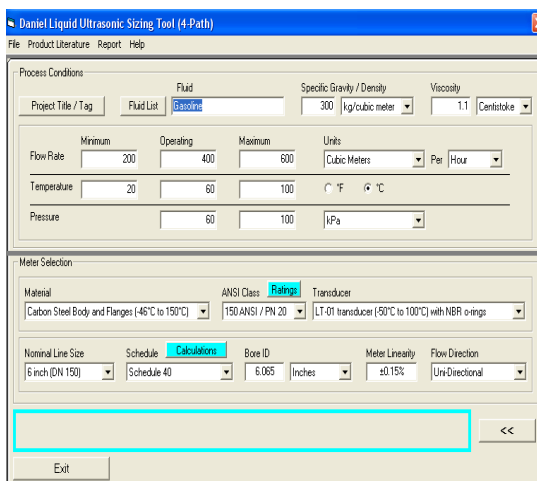
Pressure: [] 60 [] 100 PSI []

Meter Selection

Turbine Meter [] Series 1200 [] Series 1500 []

Select a Series 1200 or Series 1500 Turbine Meter.

Liquid Turbine Meter and Control Valve Sizing Tool Simulator



Daniel Liquid Ultrasonic Sizing Tool (4-Path)

File Product Literature Report Help

Process Conditions

Project Title / Tag: [] Fluid List: [] Specific Gravity / Density: [] Viscosity: []

Flow Rate: [] Minimum: [] Operating: [] Maximum: [] Units: [] Per [] Hour []

Temperature: [] 20 [] 60 [] 100 °F °C []

Pressure: [] 60 [] 100 kPa []

Meter Selection

Material: [] ANSI Class: [] Ratings: [] Transducer: []

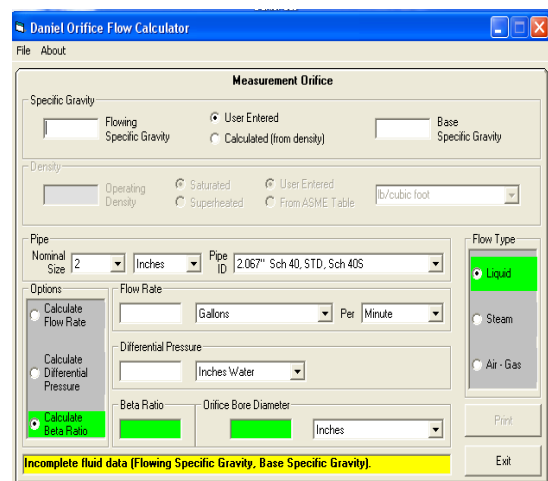
Carbon Steel Body and Flanges (-45°C to 150°C) 150 ANSI / PN 20 LT 01 transducer (50°C to 100°C) with NBR o-rings

Nominal Line Size: [] Schedule: [] Calculations: [] Bore ID: [] Meter Linearity: [] Flow Direction: []

6 inch (DN 150) Schedule 40 6.065 Inches ±0.15% Uni-Directional

Exit

Liquid Ultrasonic Meter Sizing Tool Simulator



Daniel Orifice Flow Calculator

File About

Measurement Orifice

Specific Gravity: [] Flowing Specific Gravity [] User Entered [] Base Specific Gravity []

Density: [] Operating Density [] Saturated [] User Entered [] From ASME Table []

Pipe: [] Nominal Size: [] Inches [] Pipe ID: [] 2.067" Sch 40, STD, Sch 40S []

Options: [] Calculate Flow Rate [] Calculate Differential Pressure [] Calculate Beta Ratio []

Flow Rate: [] Gallons [] Per [] Minute []

Differential Pressure: [] Inches Water []

Beta Ratio: [] Orifice Bore Diameter: [] Inches []

Flow Type: [] Liquid [] Steam [] Air - Gas []

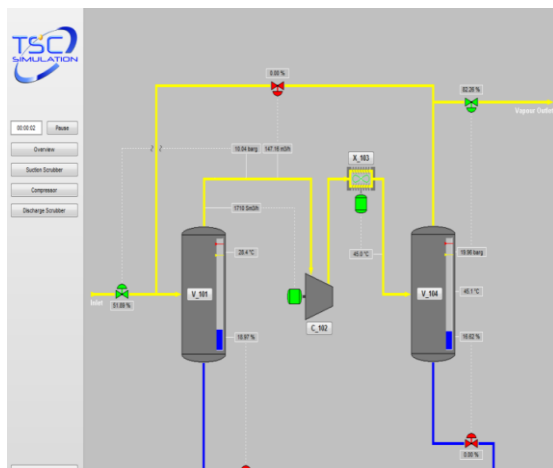
Incomplete fluid data (Flowing Specific Gravity, Base Specific Gravity).

Print Exit

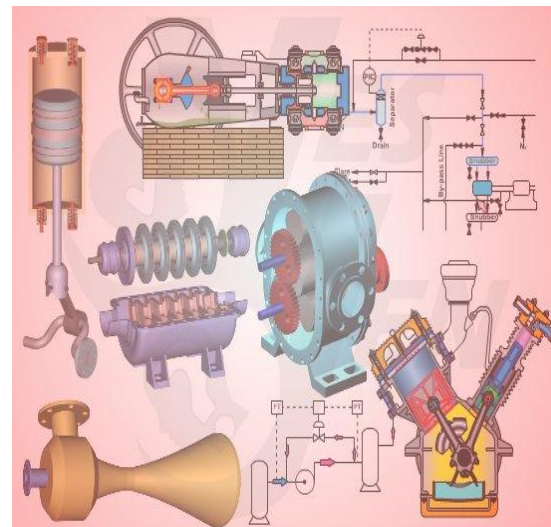
Orifice Flow Calculator Simulator



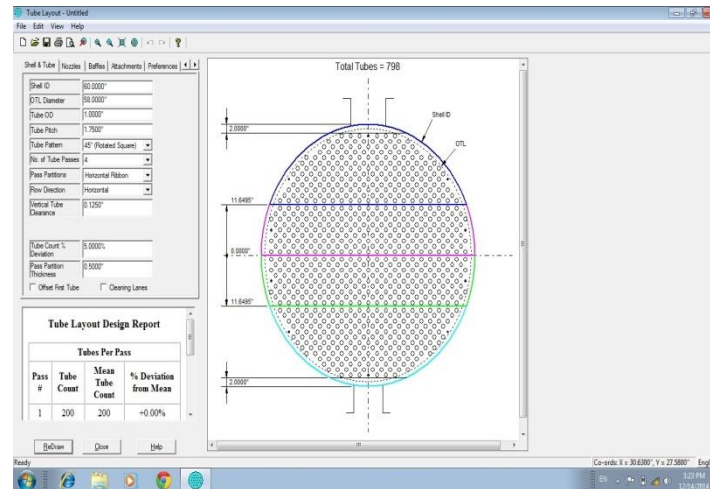
Centrifugal Pumps and Troubleshooting Guide 3.0



SIM 3300 Centrifugal Compressor Simulator



CBT on Compressors



Heat Exchanger Tube Layout Simulator

Course Coordinator

Mari Nakintu, Tel: +971 2 30 91 714, Email: mari1@haward.org