



COURSE OVERVIEW ME0447

Rotating Equipment: Start-up, Operation, Maintenance and Troubleshooting

Course Title

Rotating Equipment: Start-up, Operation, Maintenance and Troubleshooting

Course Date/Venue

October 05-09, 2026/TBA Meeting Room, Radisson Blu Gautrain Hotel, Sandton Johannesburg, South Africa

Course Reference

ME0447

Course Duration/Credits

Five days/3.0 CEUs/30 PDHs



Course Description



This practical and highly-interactive course includes various practical sessions and exercises. Theory learnt will be applied using our state-of-the-art simulators.

This course is designed to cover the machinery application. This includes the selection, operation, maintenance, inspection and troubleshooting of the various types of rotating equipment such as compressors, pumps, motors, turbines, turbo-expanders, gears and transmission equipment. The course will feature a unique blend of practical application experience and basic analysis methods. Its aim is to convey a thorough understanding of machinery operating principles, equipment and specific operations.



The course will cover the principal machines represented at a large number of plants. There will be a thorough examination of basic operating concepts, application ranges, selection criteria, maintenance, inspection and vulnerabilities of certain types of equipment. The course will also review the short-cut selection and sizing methods for fluid machinery.



Upon the successful completion of this course, participants will have gained an understanding of the 12 principal types of machinery used in industry. They will understand the differences between electric motors, design peculiarities, advantages and disadvantages of different types of gears, operating principles of gas turbines and reciprocating gas engines.





The course will convey an understanding of impulse vs. reaction turbines, insights into application ranges, limitations, maintenance and operability constraints for different kinds of pumps, compressors and dynamic gas machinery such as turbo-machinery as opposed to displacement machinery.

The course includes an e-book entitled “*Machinery’s Handbook Pocket Companion*”, published by Industrial Press, which will be given to the participants to help them appreciate the principles presented in the course.

Course Objectives/Outcomes & Benefits for the Participants

Upon the successful completion of this course, each participant will be able to:-

- Select, operate, maintain, inspect and troubleshoot the major types of rotating equipment such as pumps, compressors, motors, turbines, etc
- Discuss electric motors, gears, transmission equipment, steam turbines and expanders
- Select and use centrifugal pumps, positive displacement and vacuum pumps, turbo-compressors, fans, blowers and displacement compressors
- Implement the shortcut calculation methods for fluid machinery
- Discuss machinery reliability and availability calculations

Exclusive Smart Training Kit - H-STK®



Participants of this course will receive the exclusive “Haward Smart Training Kit” (H-STK®). The H-STK® consists of a comprehensive set of technical content which includes **electronic version** of the course materials conveniently saved in a **Tablet PC**.

Who Should Attend

This course covers systematic techniques and methodologies on the selection, operation, maintenance, inspection and troubleshooting of rotating equipment for mechanical engineers, rotating equipment engineers, supervisors and other technical staff. Further, the course is suitable to all other engineering disciplines who are dealing with rotating equipment such as process engineers, chemical engineers, electrical engineers, plant engineers, project engineers and instrumentation engineers.

Training Methodology

All our Courses are including **Hands-on Practical Sessions** using equipment, State-of-the-Art Simulators, Drawings, Case Studies, Videos and Exercises. The courses include the following training methodologies as a percentage of the total tuition hours:-

- 30% Lectures
- 20% Practical Workshops & Work Presentations
- 30% Hands-on Practical Exercises & Case Studies
- 20% Simulators (Hardware & Software) & Videos

In an unlikely event, the course instructor may modify the above training methodology before or during the course for technical reasons.

Learning Design & Customization

This course can be customized to the exact requirements of clients. Haward Technology is so proud of our huge capabilities in tailoring our courses to the training needs of our valued clients.






Course Certificate(s)

Internationally recognized certificates will be issued to all participants of the course who completed a minimum of 80% of the total tuition hours.

Certificate Accreditations

Haward's certificates are accredited by the following international accreditation organizations:

-  British Accreditation Council (BAC)

Haward Technology is accredited by the **British Accreditation Council for Independent Further and Higher Education** as an **International Centre**. Haward's certificates are internationally recognized and accredited by the British Accreditation Council (BAC). BAC is the British accrediting body responsible for setting standards within independent further and higher education sector in the UK and overseas. As a BAC-accredited international centre, Haward Technology meets all of the international higher education criteria and standards set by BAC.

-  The International Accreditors for Continuing Education and Training (IACET - USA)

Haward Technology is an Authorized Training Provider by the International Accreditors for Continuing Education and Training (IACET), 2201 Cooperative Way, Suite 600, Herndon, VA 20171, USA. In obtaining this authority, Haward Technology has demonstrated that it complies with the **ANSI/IACET 2018-1 Standard** which is widely recognized as the standard of good practice internationally. As a result of our Authorized Provider membership status, Haward Technology is authorized to offer IACET CEUs for its programs that qualify under the **ANSI/IACET 2018-1 Standard**.

Haward Technology's courses meet the professional certification and continuing education requirements for participants seeking **Continuing Education Units (CEUs)** in accordance with the rules & regulations of the International Accreditors for Continuing Education & Training (IACET). IACET is an international authority that evaluates programs according to strict, research-based criteria and guidelines. The CEU is an internationally accepted uniform unit of measurement in qualified courses of continuing education.

Haward Technology Middle East will award **3.0 CEUs** (Continuing Education Units) or **30 PDHs** (Professional Development Hours) for participants who completed the total tuition hours of this program. One CEU is equivalent to ten Professional Development Hours (PDHs) or ten contact hours of the participation in and completion of Haward Technology programs. A permanent record of a participant's involvement and awarding of CEU will be maintained by Haward Technology. Haward Technology will provide a copy of the participant's CEU and PDH Transcript of Records upon request.

Accommodation

Accommodation is not included in the course fees. However, any accommodation required can be arranged at the time of booking.





Course Instructor(s)

This course will be conducted by the following instructor(s). However, we have the right to change the course instructor(s) prior to the course date and inform participants accordingly:



Mr. Andrew Ladwig is a **Senior Mechanical & Maintenance Engineer** with over **25 years** of extensive experience within the **Oil & Gas, Refinery, Petrochemical & Power** industries. His expertise widely covers in the areas of **Maintenance Optimization & Best Practices, Process Plant Shutdown & Turnaround, Maintenance Auditing & Benchmarking, Reliability Management, Reliability Centered Maintenance Principles & Application, Efficient**

Shutdowns, Machinery Lubrication, Maintenance Planning & Scheduling, Coupling & Shaft Alignment Techniques, Maintenance Auditing & Benchmarking, Reliability Management, Reliability Centered Maintenance Principles & Application, Efficient Shutdowns, Machinery Lubrication, Maintenance Planning & Scheduling, Coupling & Shaft Alignment Techniques, Reliability, Availability & Maintainability (RAM), Root Cause Analysis, Maintenance Process, Reliability-Centered Maintenance (RCM), Reliability Engineering Analysis (RE), Root Cause Analysis (RCA), Asset Integrity Management (AIM), Reactive & Proactive Maintenance, Pressure Safety Relief Valve Repair & Recalibration, PSV/PRV Troubleshooting, PRV Testing & Repair, Valve Testing & Inspection, Valve Sealing, Valve Calibration, Control Valves & Actuators, Boiler Inspection & Maintenance, Boiler Systems, Boiler instrumentation & Controls, Boiler Start-up & Shutdown, Boiler Operation & Steam System Management, Boiler Water Chemistry & Treatment, Boiler Efficiency & Waste Heat Recovery, Boiler Inspection & Testing, Boiler Maintenance, Boiler Troubleshooting & Safety, Boiler Emissions & Pollution Control, Combustion Analysis & Tuning Procedures, Water Treatment Technology, Heat Recovery Steam Generating (HRSG), Impulse Tube Installation & Inspection, Parker Compression Fittings, Pipes & Fittings, PSV Inspection, Root Cause Failure Analysis, Tank Design & Engineering, Tank Shell, Tanks & Tank Farms, Vacuum Tanks, Gas Turbine Operating & Maintenance, Reciprocating & Centrifugal Compressors, Screw Compressor, Compressor Control & Protection, Gas & Steam Turbines, Turbine Operations, Gas Turbine Technology, Valves, Process Control Valves, Bearings & Lubrication and Advanced Machinery Dynamics.

During his career life, Mr. Ladwig has gained his practical experience through his various significant positions and dedication as the **Mechanical Engineer, Project Engineer, Reliability & Maintenance Engineer, Maintenance Support Engineer, Process Engineer, HSE Supervisor, Warehouse Manager, Quality Manager, Business Analyst, Senior Process Controller, Process Controller, Safety Officer, Mechanical Technician, Senior Lecturer and Senior Consultant/Trainer** for various companies such as the Sasol Ltd., Sasol Wax, Sasol Synfuels, just to name a few.

Mr. Ladwig has a **Bachelor's** degree in **Chemical Engineering** and a **Diploma in Mechanical Engineering**. Further, he is a **Certified Instructor/Trainer, a Certified Internal Verifier/Assessor/Trainer** by the **Institute of Leadership & Management (ILM)** and has delivered various trainings, workshops, seminars, courses and conferences internationally.

Course Fee

US\$ 5,500 per Delegate + **VAT**. This rate includes H-STK® (Haward Smart Training Kit), buffet lunch, coffee/tea on arrival, morning & afternoon of each day.





Course Program

The following program is planned for this course. However, the course instructor(s) may modify this program before or during the course for technical reasons with no prior notice to participants. Nevertheless, the course objectives will always be met:

Day 1: Monday, 05th of October 2026

0730 – 0800	Registration & Coffee
0800 – 0815	Welcome & Introduction
0815 – 0830	PRE-TEST
0830 – 0930	Electric Motors Design • Controls • Wiring Systems • Standard Motors • Special Designs • Major Components • The Motor as Part of a System • Adjustable Frequency Motors
0930 – 0945	Break
0945 – 1100	Gears & Transmission Equipment Types of Gears • Applications Constraints • Maintenance
1100 – 1230	Gas Turbines & Engines Simple Cycle • Heat Recovery Cycles • Type Selection • Maintenance • Two and Four Cycle Gas Engines • Gas Engine Compressor Auxiliary Systems
1230 – 1245	Break
1245 – 1420	Steam Turbines & Expanders Impulse Turbines • Reaction Turbines • Application Ranges • Turbine Configurations • Applications Constraints • Maintenance
1420 – 1430	Recap Using this Course Overview, the Instructor(s) will Brief Participants about the Topics that were Discussed Today and Advise Them of the Topics to be Discussed Tomorrow
1430	Lunch & End of Day One

Day 2: Tuesday, 06th of October 2026

0730 – 0930	Steam Turbines & Expanders (cont'd) Turbo-expander Construction Features • Applications • Operation
0930 – 0945	Break
0945 – 1100	Centrifugal Pumps Configurations and Styles • Application Ranges and Constraints • Construction Features and Options • Pump Auxiliaries • Wear Components
1100 – 1230	Centrifugal Pumps (cont'd) Canned Motor and Magnetic Drive Pumps • High Speed/Low Flow Pumps • Servicing and Condition Monitoring
1230 – 1245	Break
1245 – 1420	Positive Displacement & Vacuum Pumps Reciprocating Steam and Power Pumps • Diaphragm Pumps • Plunger Pumps • Gear Screw and Progressive Cavity Pumps • Peristaltic Pumps
1420 – 1430	Recap Using this Course Overview, the Instructor(s) will Brief Participants about the Topics that were Discussed Today and Advise Them of the Topics to be Discussed Tomorrow
1430	Lunch & End of Day Two



Day 3: Wednesday, 07th of October 2026

0730 – 0930	Positive Displacement & Vacuum Pumps (cont'd) Conventional and Special Vacuum Pumps • Liquid Jet and Liquid Ring Pumps • Combination and Staged Vacuum Pumps
0930 – 0945	Break
0945 – 1100	Turbo-compressors Types, Styles and Configurations of Centrifugal and Axial Compressors • Construction Features • Mode of Operation • Compressor Auxiliaries and Support Systems
1100 – 1230	Turbo-compressors (cont'd) Condition Monitoring • Application Criteria • Performance Capabilities and Limitations • Maintenance
1230 – 1245	Break
1245 – 1420	Fans & Blowers Types and Configurations • Performance and System Effects
1420 – 1430	Recap Using this Course Overview, the Instructor(s) will Brief Participants about the Topics that were Discussed Today and Advise Them of the Topics to be Discussed Tomorrow
1430	Lunch & End of Day Three

Day 4: Thursday, 08th of October 2026

0730 – 0930	Fans & Blowers (cont'd) Performance Correction • Capacity Control Options
0930 – 0945	Break
0945 – 1100	Displacement Compressors Classification • Reciprocating Compressors vs. Rotary Screw Compressors
1100 – 1230	Displacement Compressors (cont'd) Application Ranges and Limitations • Compression Processes
1230 – 1245	Break
1245 – 1420	Displacement Compressors (cont'd) Construction Features and Components • Capacity Control
1420 – 1430	Recap Using this Course Overview, the Instructor(s) will Brief Participants about the Topics that were Discussed Today and Advise Them of the Topics to be Discussed Tomorrow
1430	Lunch & End of Day Four

Day 5: Friday, 09th of October 2026

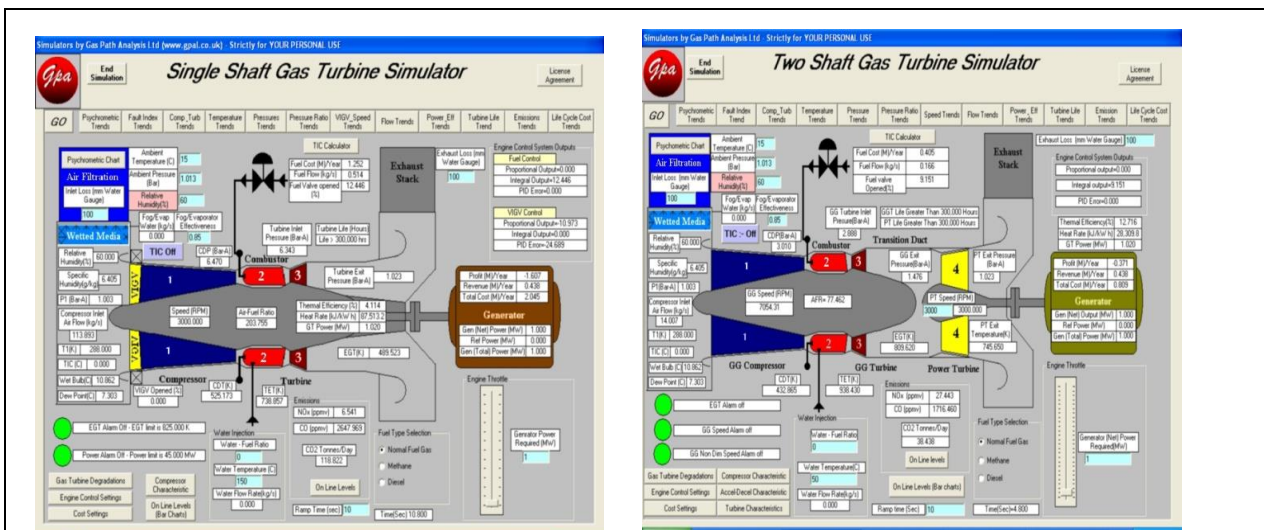
0730 – 0930	Theory & Shortcut Calculation Methods for Fluid Machinery Pumps • Turbines
0930 – 0945	Break
0945 – 1100	Theory & Shortcut Calculation Methods for Fluid Machinery (cont'd) Compressors
1100 – 1230	Machinery Reliability & Availability Calculations Reliability Indices
1230 – 1245	Break



1245 - 1345	Machinery Reliability & Availability Calculations (cont'd) Machinery Systems Reliability Calculations
1345 - 1400	Course Conclusion Using this Course Overview, the Instructor(s) will Brief Participants about the Course Topics that were Covered During the Course
1400 - 1415	POST-TEST
1415 - 1430	Presentation of Course Certificates
1430	Lunch & End of Course

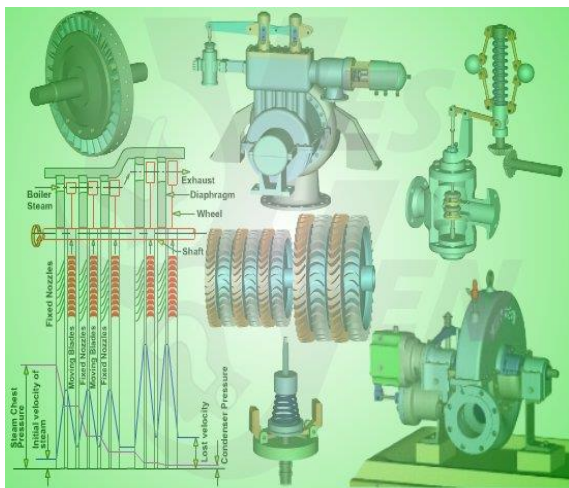
Simulator (Hands-on Practical Sessions)

Practical sessions will be organized during the course for delegates to practice the theory learnt. Delegates will be provided with an opportunity to carryout various exercises using our state-of-the-art “Single Shaft Gas Turbine Simulator” and “Two Shaft Gas Turbine Simulator”, “Steam Turbine & Governing System”, “Centrifugal Pumps and Troubleshooting Guide 3.0”, “SIM 3300 Centrifugal Compressor Simulator” and “CBT on Compressors” Simulators.

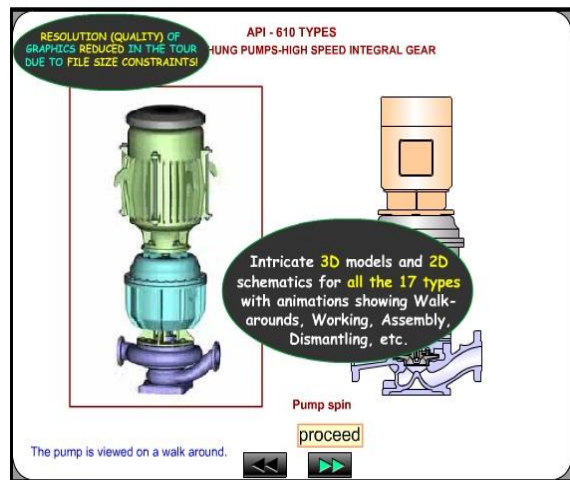


Single Shaft Gas Turbine Simulator

Two Shaft Gas Turbine Simulator

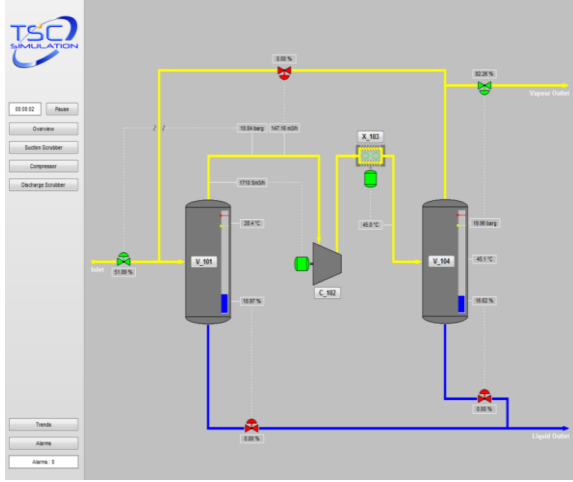


Steam Turbine & Governing System

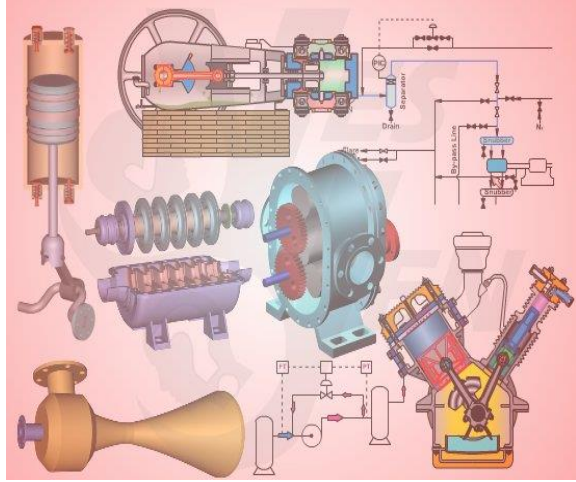


Centrifugal Pumps and Troubleshooting Guide 3.0





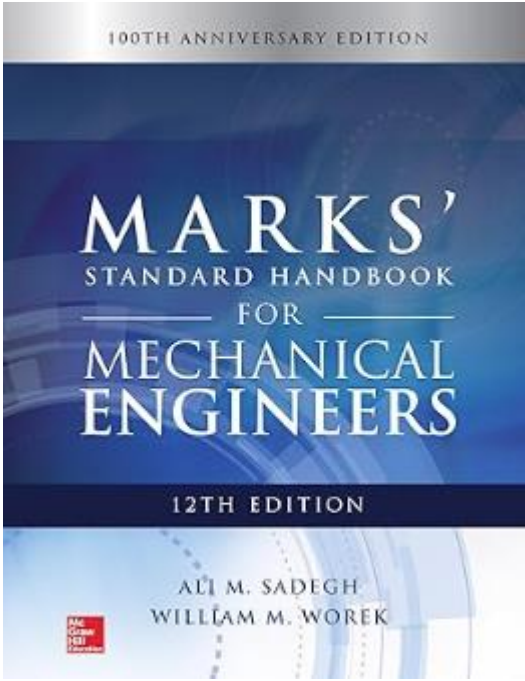
SIM 3300 Centrifugal Compressor Simulator



CBT on Compressors

Book(s)

As part of the course kit, the following e-book will be given to all participants:



Title : Marks' Standard Handbook For Mechanical Engineers

ISBN : 1259588505

Author : Ali Sadegh, William Worek

Publisher :

Course Coordinator

Mari Nakintu, Tel: +971 2 30 91 714, Email: mari1@haward.org

