

**COURSE OVERVIEW ME0599**

**Cooling Towers: Selection, Operation & Maintenance**

**Course Title**

Cooling Towers: Selection, Operation & Maintenance

**Course Date/Venue**

September 21-25, 2025/TBA Meeting Room, Taksim Square Hotel, Istanbul, Turkey

**Course Reference**

ME0599

**Course Duration/Credits**

Five days/3.0 CEUs/30 PDHs



**Course Description**



***This practical and highly-interactive course includes real-life case studies and exercises where participants will be engaged in a series of interactive small groups and class workshops.***



This course is designed to introduce the technology of cooling towers, show how cooling towers fit into the overall function of an industrial facility, and show the engineering principles employed by commonly used cooling towers. Participants will also get introduced to the methods used in designing cooling towers and discuss on common operation consideration such as estimating make-up water flow, etc.



At the completion of the course, participants will be able to evaluate the design, sizing, capacity control, placement and water make-up and losses of draught towers; interpret the performance variables, sea level, altitude and motor power of cooling towers; carry out the performance evaluation, commissioning, specifying and selection of cooling towers and the preparation of specification sheet for the cooling tower components; and evaluate and interpret water quality, corrosion, material and maintenance requirements of state of the art cooling towers.

### **Course Objectives**

Upon the successful completion of this course, each participant will be able to:-

- Apply a comprehensive knowledge, applications, techniques and procedures on selection, operation and maintenance of cooling towers
- Discuss the different purpose, types and systems of cooling towers and analyze psychrometrics, heat and mass transfer
- Evaluate the design, sizing, capacity control, placement and water make-up and losses of draught towers
- Interpret the performance variables, sea level and altitude and motor power of cooling towers
- Carryout the performance evaluation, commissioning, specifying and selection of cooling towers and the preparation of specification sheet for the cooling tower components
- Evaluate and interpret water quality, corrosion, material and maintenance requirements of state of the art cooling towers

### **Who Should Attend**

This course is intended for plant engineers, operation staff, supervisory personnel concerned with the selection, supervision, operation and maintenance of cooling towers and capital equipment for industrial, utility, institutional and commercial plants. Those involved in design engineering, field technical service and related problems solving will also benefit from this course.

### **Training Methodology**

All our Courses are including **Hands-on Practical Sessions** using equipment, State-of-the-Art Simulators, Drawings, Case Studies, Videos and Exercises. The courses include the following training methodologies as a percentage of the total tuition hours:-

- 30% Lectures
- 20% Practical Workshops & Work Presentations
- 30% Hands-on Practical Exercises & Case Studies
- 20% Simulators (Hardware & Software) & Videos

In an unlikely event, the course instructor may modify the above training methodology before or during the course for technical reasons.

### **Course Fee**

**US\$ 6,000** per Delegate + **VAT**. This rate includes Participants Pack (Folder, Manual, Hand-outs, etc.), buffet lunch, coffee/tea on arrival, morning & afternoon of each day.

### **Accommodation**


Accommodation is not included in the course fees. However, any accommodation required can be arranged at the time of booking.

### Course Certificate(s)

Internationally recognized certificates will be issued to all participants of the course who completed a minimum of 80% of the total tuition hours.

### Certificate Accreditations


Certificates are accredited by the following international accreditation organizations:-

- 
The International Accreditors for Continuing Education and Training (IACET - USA)

Haward Technology is an Authorized Training Provider by the International Accreditors for Continuing Education and Training (IACET), 2201 Cooperative Way, Suite 600, Herndon, VA 20171, USA. In obtaining this authority, Haward Technology has demonstrated that it complies with the **ANSI/IACET 2018-1 Standard** which is widely recognized as the standard of good practice internationally. As a result of our Authorized Provider membership status, Haward Technology is authorized to offer IACET CEUs for its programs that qualify under the **ANSI/IACET 2018-1 Standard**.

Haward Technology's courses meet the professional certification and continuing education requirements for participants seeking **Continuing Education Units (CEUs)** in accordance with the rules & regulations of the International Accreditors for Continuing Education & Training (IACET). IACET is an international authority that evaluates programs according to strict, research-based criteria and guidelines. The CEU is an internationally accepted uniform unit of measurement in qualified courses of continuing education.

Haward Technology Middle East will award **3.0 CEUs** (Continuing Education Units) or **30 PDHs** (Professional Development Hours) for participants who completed the total tuition hours of this program. One CEU is equivalent to ten Professional Development Hours (PDHs) or ten contact hours of the participation in and completion of Haward Technology programs. A permanent record of a participant's involvement and awarding of CEU will be maintained by Haward Technology. Haward Technology will provide a copy of the participant's CEU and PDH Transcript of Records upon request.

- 
British Accreditation Council (BAC)

Haward Technology is accredited by the **British Accreditation Council for Independent Further and Higher Education** as an **International Centre**. BAC is the British accrediting body responsible for setting standards within independent further and higher education sector in the UK and overseas. As a BAC-accredited international centre, Haward Technology meets all of the international higher education criteria and standards set by BAC.

### Course Instructor(s)

This course will be conducted by the following instructor(s). However, we have the right to change the course instructor(s) prior to the course date and inform participants accordingly:



**Mr. Karl Thanasis**, PEng, MSc, MBA, BSc, is **Senior Engineer** with over **30 years** of extensive industrial experience. His wide expertise includes **Energy Efficient Operation of District Cooling Plants, Piping & Pipeline, Maintenance, Repair, Shutdown, Turnaround & Outages, Maintenance & Reliability Management, Mechanical Maintenance Planning, Scheduling & Work Control, Advanced Techniques in Maintenance Management, Predictive & Preventive Maintenance, Maintenance & Operation Cost Reduction**

**Techniques, Reliability Centered Maintenance (RCM), Machinery Failure Analysis, Rotating Equipment Reliability Optimization & Continuous Improvement, Material Cataloguing, Mechanical & Rotating Equipment Troubleshooting & Maintenance, Root Cause Analysis & Reliability Improvement, Condition Monitoring, Root Cause Failure Analysis (RCFA), Steam Generation, Steam Turbines, Power Generator Plants, Gas Turbines, Chiller Equipment, Trane Chiller Diagnostics Troubleshooting, Combined Cycle Plants, Boilers, Process Fired Heaters, Air Preheaters, Induced Draft Fans, All Heaters Piping Work, Refractory Casting, Heater Fabrication, Thermal & Fired Heater Design, Heat Exchangers, Heat Transfer, Coolers, Power Plant Performance, Efficiency & Optimization, Storage Tank Design & Fabrication, Thermal Power Plant Management, Boiler & Steam System Management, Pumps & Compressors, Pump Operation & Maintenance, Chiller & Chiller Plant Design & Installation, Pressure Vessel, Safety Relief Valve Sizing & Selection, Valve Disassembling & Repair, Pressure Relief Devices (PSV), Hydraulic & Pneumatic Maintenance, Advanced Valve Technology, Pressure Vessel Design & Fabrication, Pumps, Turbo-Generator, Turbine Shaft Alignment, Lubrication, Mechanical Seals, Packing, Blowers, Bearing Installation, Couplings, Clutches and Gears.** Further, he is also versed in **Wastewater Treatment Technology, Networking System, Water Network Design, Industrial Water Treatment in Refineries & Petrochemical Plants, Piping System, Water Movement, Water Filtering, Mud Pumping, Sludge Treatment and Drying, Aerobic Process of Water Treatment that includes Aeration, Sedimentation and Chlorination Tanks.** His strong background also includes **Design and Sizing of all Waste Water Treatment Plant Associated Equipment such as Sludge Pumps, Filters, Metering Pumps, Aerators and Sludge Decanters.**

Mr. Thanasis has acquired his thorough and practical experience as the **Project Manager, Plant Manager, Area Manager - Equipment Construction, Construction Superintendent, Project Engineer and Design Engineer.** His duties covered **Plant Preliminary Design, Plant Operation, Write-up of Capital Proposal, Investment Approval, Bid Evaluation, Technical Contract Write-up, Construction and Sub-contractor Follow up, Lab Analysis, Sludge Drying and Management of Sludge Odor and Removal.** He has worked in various companies worldwide in the **USA, Germany, England and Greece.**

Mr. Thanasis is a **Registered Professional Engineer** in the **USA and Greece** and has a **Master and Bachelor** degrees in **Mechanical Engineering with Honours** from the **Purdue University and SIU in USA** respectively as well as an **MBA** from the **University of Phoenix in USA.** Further, he is a **Certified Internal Verifier/Trainer/Assessor** by the **Institute of Leadership & Management (ILM)** a **Certified Instructor/Trainer** and has delivered numerous trainings, courses, seminars, workshops and conferences worldwide.

**Course Program**

The following program is planned for this course. However, the course instructor(s) may modify this program before or during the course for technical reasons with no prior notice to participants. Nevertheless, the course objectives will always be met:

**Day 1: Sunday, 21<sup>st</sup> of September 2025**

0730 – 0800	Registration & Coffee
0800 – 0815	Welcome & Introduction
0815 – 0830	<b>PRE-TEST</b>
0830 – 0930	<b>Introduction to Cooling Towers</b>
0930 – 0945	Break
0945 – 1100	<b>Purpose, Types &amp; Systems</b>
1100 – 1215	<b>Basic Theory &amp; Psychrometrics</b>
1215 – 1230	Break
1230 – 1330	<b>Heat &amp; Mass Transfer</b>
1330 – 1420	<b>Tutorials</b>
1420 – 1430	<b>Recap</b>
1430	Lunch & End of Day One

**Day 2: Monday, 22<sup>nd</sup> of September 2025**

0730 – 0830	<b>Natural Draught Towers</b>
0830 – 0930	<b>Design Considerations</b>
0930 – 0945	Break
0945 – 1100	<b>Sizing, Capacity Control &amp; Placement</b>
1100 – 1215	<b>Water Make-up Losses</b>
1215 – 1230	Break
1230 – 1420	<b>Tutorials</b>
1420 – 1430	<b>Recap</b>
1430	Lunch & End of Day Two

**Day 3: Tuesday, 23<sup>rd</sup> of September 2025**

0730 – 0830	<b>Tower Demand</b>
0830 – 0930	<b>Motor Power</b>
0930 – 0945	Break
0945 – 1100	<b>Packing &amp; Pressure Drops</b>
1100 – 1215	<b>Performance Variables</b>
1215 – 1230	Break
1230 – 1330	<b>Sea Level &amp; Altitude</b>
1330 – 1420	<b>Tutorials</b>
1420 – 1430	<b>Recap</b>
1430	Lunch & End of Day Three

**Day 4: Wednesday, 24<sup>th</sup> of September 2025**

0730 – 0815	<b>Performance Evaluation &amp; Commissioning</b>
0815 – 0900	<b>Comparison Between Theory &amp; Practice</b>
0900 – 0915	Break
0915 – 0945	<b>Specification &amp; Selection</b>
0945 – 1100	<b>Typical Specification Sheet</b>
1100 – 1245	<b>Discussion Regarding Practical Problems &amp; Issues</b>

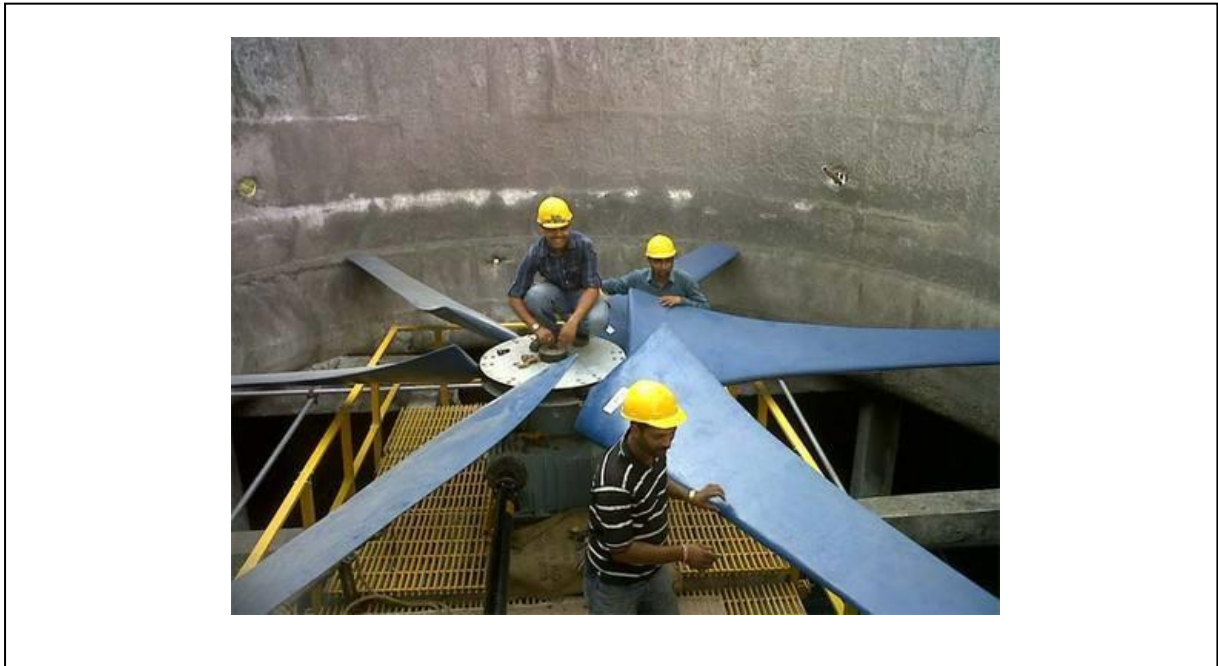
1245 – 1300	Break
1300 – 1420	<i>Discussion Regarding Practical Problems &amp; Issues (cont'd)</i>
1420 – 1430	<i>Recap</i>
1430	<i>Lunch &amp; End of Day Four</i>

**Day 5: Thursday, 25<sup>th</sup> of September 2025**

0730 – 0930	<i>Water Quality</i>
0930 – 0945	Break
0945 – 1100	<i>Corrosion Consideration &amp; Material Selection</i>
1100 – 1215	<i>Maintenance Requirements</i>
1215 – 1230	Break
1230 – 1345	<i>State of the Art Towers</i>
1345 – 1400	<i>Course Conclusion</i>
1400 – 1415	<b>POST-TEST</b>
1415 – 1430	<i>Presentation of Course Certificates</i>
1430	<i>Lunch &amp; End of Course</i>

**Practical Sessions**

This practical and highly-interactive course includes real-life case studies and exercises:-



**Course Coordinator**

Mari Nakintu, Tel: +971 2 30 91 714, Email: [mari1@haward.org](mailto:mari1@haward.org)