



COURSE OVERVIEW ME0398-4D Pumps, Compressors, Turbines & Troubleshooting

Course Title

Pumps, Compressors, Turbines & Troubleshooting

Course Date/Venue

Session 1 : August 05-08, 2024/Fujairah
Meeting Room, Grand Millennium Al
Wahda Hotel, Abu Dhabi, UAE

Session 2: November 11-14, 2024/Boardroom
1, Elite Byblos Hotel Al Barsha, Sheikh
Zayed Road, Dubai, UAE

Course Reference

ME0398-4D



Course Duration/Credits

Four days/2.4 CEUs/24 PDHs

Course Description



This practical and highly-interactive course includes various practical sessions and exercises. Theory learnt will be applied using our state-of-the-art simulators.



This course is designed to provide delegates with a detailed and up-to-date overview of the fluid mechanic fundamentals and operating practice of pumps, compressors and turbines. It will address aspects of both axial and centrifugal compressors. Upon the successful completion of this course, participants will have acquired the practical knowledge to enable them not only to choose the correct device for a particular application but also be in a position to resolve many commonly occurring operating problems.



The course is ideal for those personnel in the oil, gas, petrochemical, chemical, power and other process industries who require a wider and deeper appreciation of pumps, compressors and turbines, including their design, performance and operation. No prior knowledge of the topic is required. Participants will be taken through an intensive primer of turbo-machinery principles, using the minimum of mathematics, and will learn how to solve the many and varied practical industrial problems that are encountered. The course makes use of an extensive collection of VIDEO material.



Course Objectives

Upon the successful completion of this course, each participant will be able to:-

- Apply a comprehensive knowledge in pumps, compressors & turbines and troubleshoot rotating equipment in a professional manner
- Identify the different types of turbomachinery including basic design aspects and highlighted problem areas
- Minimize the compressor work by understanding the processes involved and identifying their efficiency
- Discuss the axial flow compressor and the corresponding velocity triangles including torque and power calculations
- List the different types of centrifugal machines including their design, installation, operation, maintenance, re-rate/retrofit and troubleshooting
- Recognize the various beneficial design aspects of turbomachines and understand the crucial process of cavitation in pumps
- Carryout the proper methods of centrifugal pumps installation, operation, maintenance and troubleshooting

Exclusive Smart Training Kit - H-STK®



Participants of this course will receive the exclusive “Haward Smart Training Kit” (H-STK®). The H-STK® consists of a comprehensive set of technical content which includes **electronic version** of the course materials, sample video clips of the instructor’s actual lectures & practical sessions during the course conveniently saved in a **Tablet PC**.

Who Should Attend

This course provides an overview of all significant aspects and considerations of pumps, compressors and turbines for those who are involved in the design, selection, maintenance or troubleshooting of such equipment. This includes maintenance, reliability, integrity, engineering, production and operations managers, engineers and other technical staff. Project managers and engineers will also benefit from this program.

Training Methodology

All our Courses are including **Hands-on Practical Sessions** using equipment, State-of-the-Art Simulators, Drawings, Case Studies, Videos and Exercises. The courses include the following training methodologies as a percentage of the total tuition hours:-

- 30% Lectures
- 20% Practical Workshops & Work Presentations
- 30% Hands-on Practical Exercises & Case Studies
- 20% Simulators (Hardware & Software) & Videos


In an unlikely event, the course instructor may modify the above training methodology before or during the course for technical reasons.

Course Certificate(s)

Internationally recognized certificates will be issued to all participants of the course who completed a minimum of 80% of the total tuition hours.

Certificate Accreditations


Certificates are accredited by the following international accreditation organizations: -

- 
The International Accreditors for Continuing Education and Training (IACET - USA)

Haward Technology is an Authorized Training Provider by the International Accreditors for Continuing Education and Training (IACET), 2201 Cooperative Way, Suite 600, Herndon, VA 20171, USA. In obtaining this authority, Haward Technology has demonstrated that it complies with the **ANSI/IACET 2018-1 Standard** which is widely recognized as the standard of good practice internationally. As a result of our Authorized Provider membership status, Haward Technology is authorized to offer IACET CEUs for its programs that qualify under the **ANSI/IACET 2018-1 Standard**.

Haward Technology's courses meet the professional certification and continuing education requirements for participants seeking **Continuing Education Units (CEUs)** in accordance with the rules & regulations of the International Accreditors for Continuing Education & Training (IACET). IACET is an international authority that evaluates programs according to strict, research-based criteria and guidelines. The CEU is an internationally accepted uniform unit of measurement in qualified courses of continuing education.

Haward Technology Middle East will award **2.4 CEUs** (Continuing Education Units) or **24 PDHs** (Professional Development Hours) for participants who completed the total tuition hours of this program. One CEU is equivalent to ten Professional Development Hours (PDHs) or ten contact hours of the participation in and completion of Haward Technology programs. A permanent record of a participant's involvement and awarding of CEU will be maintained by Haward Technology. Haward Technology will provide a copy of the participant's CEU and PDH Transcript of Records upon request.

- 
British Accreditation Council (BAC)

Haward Technology is accredited by the **British Accreditation Council for Independent Further and Higher Education** as an **International Centre**. BAC is the British accrediting body responsible for setting standards within independent further and higher education sector in the UK and overseas. As a BAC-accredited international centre, Haward Technology meets all of the international higher education criteria and standards set by BAC.



Course Instructor(s)

This course will be conducted by the following instructor(s). However, we have the right to change the course instructor(s) prior to the course date and inform participants accordingly:



Mr. Den Bazley, PE, BSc, is a **Senior Mechanical Engineer** with over **30 years** of industrial experience in **Oil, Gas, Refinery, Petrochemical, Power and Utilities** industries. His wide expertise includes **Pumps & Compressors Maintenance & Troubleshooting, Centrifugal Pump Design, Hydraulic Turbines, Axial Flow Compressor, Centrifugal Pump Installation & Operation, Centrifugal Pump Maintenance & Troubleshooting, Centrifugal & Positive Displacement Pump Technology, Pumps & Valves Operation, Bearings, Seals & Couplings, Compressors & Turbines Maintenance & Troubleshooting, Gas Turbine Design & Maintenance, Gas Turbine Troubleshooting, Pressure Vessel Design, Fabrication & Testing, Tank & Tank**

Farms, Heat Exchangers Operation & Maintenance, Boilers & Steam System Management, Re-tubing & Tube Expanding Technology, Propylene Compressor & Turbine, Valve Installation & Repair, Safety Relief Valve Sizing & Troubleshooting, Dry Gas Seal Operation, Mechanical Seal Installation & Maintenance, Industrial Equipment & Turbomachinery, Pumps, Compressors, Turbines & Motors, Boiler & Steam System Management, Tune-Up, Heat Recovery & Optimization, Bearing & Lubrication, Installation & Failure Analysis, Boiler Operation & Maintenance, Process Control Valves, Steam Turbine Operation, Bearing Mounting/Dismounting, Valve Types, Troubleshooting & Repair Procedure, Pressure Vessels & Heat Exchangers, Corrosion Inspection, PSV Maintenance & Testing, Pump Maintenance, Machinery Troubleshooting, Valves, Safety Relief Valves, Strainers & Steam Traps, Pipeline Rules of Thumb, Analytical Prevention of Mechanical Failure, Gear Boxes Troubleshooting & Repair, Piping & Pipeline Design & Inspection, Pigging & Integrity Assessment, Process Piping Design, Pipeline Operation & Maintenance, Welding & Fabrication, Brazing, Fitness-for-Service (FFS), Process Plant Equipment, Pressure Vessels, Piping & Storage Facilities, Layout of Piping Systems & Process Equipment, Pipe Work Design & Fabrication, Mechanical Integrity & Reliability, Mechanical Rotating Equipment & Turbomachinery, Motors & Variable Speed Drives, Mechanical Engineering Design, Process Plant Shutdown, Turnaround & Troubleshooting, Mechanical Alignment, Laser & Dial-Indicator Techniques, Material Cataloguing, Condition Based Monitoring, Maintenance Management, Reliability Management, Reliability Centred Maintenance (RCM), Total Plant Maintenance (TPM) and Reliability-Availability-Maintainability (RAM), Engineering Drawings, Codes & Standards, P&ID Reading, Interpretation & Developing, Maintenance & Reliability Best Practices, Maintenance Auditing, Benchmarking & Performance Improvement, Excellence in Maintenance & Reliability Management, Preventive & Predictive Maintenance & Machinery Failure Analysis (RCFA), Total Plant Reliability Centred Maintenance (RCM), Rotating Equipment Reliability Optimization, Machinery Failure Analysis, Prevention & Troubleshooting, Maintenance Planning, Scheduling & Work Control and Maintenance Planning & Cost Estimation.

During his career life, Mr. Bazley has gained his practical and field experience through his various significant positions and dedication as the **General Manager, Branch Manager, Refinery Chairman, Engineering Manager, Maintenance Engineer, Construction Engineer, Project Engineer, Mechanical Engineer, Associate Engineer, Oil Process Engineer, Mechanical Services Superintendent, Quality Coordinator, Planning Coordinator, Consultant/Instructor, Lecturer/Trainer** and **Public Relations Officer** for numerous international companies like **ESSO, FFS Refinery, Dorbyl Heavy Engineering (VECOR), Vandenberg Foods (Unilever), Engen Petroleum, Royle Trust** and **Pepsi-Cola**.

Mr. Bazley is a **Registered Professional Engineer** and has a **Bachelor degree in Mechanical Engineering**. Further, he is a **Certified Engineer** (Government Certificate of Competency GCC Mechanical Pretoria), a **Certified Instructor/Trainer**, a **Certified Internal Verifier/Assessor/Trainer** by the **Institute of Leadership and Management (ILM)**, an active member of the **Institute of Mechanical Engineers (IMechE)** and has delivered numerous trainings, courses, seminars and workshops internationally.



Course Fee

US\$ 4,500 per Delegate + **VAT**. This rate includes H-STK® (Haward Smart Training Kit), buffet lunch, coffee/tea on arrival, morning & afternoon of each day.

Accommodation

Accommodation is not included in the course fees. However, any accommodation required can be arranged at the time of booking.

Course Program

The following program is planned for this course. However, the course instructor(s) may modify this program before or during the course for technical reasons with no prior notice to participants. Nevertheless, the course objectives will always be met:

Day 1

| | |
|-------------|--|
| 0730 – 0800 | <i>Registration & Coffee</i> |
| 0800 – 0815 | <i>Welcome & Introduction</i> |
| 0815 – 0830 | PRE-TEST |
| 0830 – 0930 | Introduction to Turbomachinery <i>Highlighted Problem Areas</i> |
| 0930 – 0945 | <i>Break</i> |
| 0945 – 1000 | Ideal Gas Equation & Practical Application <i>Isentropic Processes • Property Diagrams Involving Entropy</i> |
| 1000 – 1100 | Isentropic Processes of Ideal Gases <i>Constant Specific Heats • Relative Pressure and Relative Specific Volume</i> |
| 1100 – 1200 | Minimizing Compressor Work <i>Polytropic Processes • Multi-Stage Compression with Inter-Cooling • Isentropic Efficiency of Turbines • Isentropic Efficiency of Compressors and Pumps</i> |
| 1200 – 1230 | Momentum & Bernoulli's Relations <i>General Relationship • Relationships for Incompressible Fluids</i> |
| 1230 – 1245 | <i>Break</i> |
| 1245 – 1315 | VIDEO: Basic Pump Types & Technology |
| 1315 – 1345 | General Description of Turbomachines <i>Centrifugal Pump • Centrifugal Turbine • Centrifugal Air Compressor</i> |
| 1345 – 1420 | Impulse Turbine <i>Velocity Triangles</i> |
| 1420 – 1430 | Recap <i>Using this Course Overview, the Instructor(s) will Brief Participants about the Topics that were Discussed Today and Advise Them of the Topics to be Discussed Tomorrow</i> |
| 1430 | <i>Lunch & End of Day One</i> |

Day 2

| | |
|-------------|---|
| 0730 – 0830 | Axial Flow Compressor <i>Velocity Triangles • Torque Calculation and Torque Coefficient • Power Calculation and Power Coefficient</i> |
| 0830 – 0930 | Centrifugal Machines <i>Torque Calculation • Head Coefficient • Flow Coefficient • Torque Coefficient</i> |



| | |
|-------------|---|
| 0930 – 0945 | Break |
| 0945 – 1015 | Performance Curves |
| 1015 – 1100 | Centrifugal Pump Centrifugal Multistage Pump • Mixed Flow Machines • Centrifugal Air Compressor |
| 1100 – 1130 | Affinity Laws Effect of Impeller Speed • Effect of Impeller Diameter |
| 1130 – 1230 | Specific Speed |
| 1230 – 1245 | Break |
| 1245 – 1345 | Specific Radius |
| 1345 – 1420 | Hydraulic Turbines |
| 1420 – 1430 | Recap Using this Course Overview, the Instructor(s) will Brief Participants about the Topics that were Discussed Today and Advise Them of the Topics to be Discussed Tomorrow |
| 1430 | Lunch & End of Day Two |

Day 3

| | |
|-------------|---|
| 0730 – 0800 | VIDEO: Fundamentals of Pump Performance 1 |
| 0800 - 0830 | Design Aspects of Turbomachines Linear Cascades • Radial Cascades • Three- Dimensional Aspects of Axial- Flow Machines • Elementary Design Considerations |
| 0830 – 0930 | Cavitation |
| 0930 – 0945 | Break |
| 0945 - 1045 | Centrifugal Pumps Basics Types of Centrifugal Pumps • Self- Priming Pumps • Specific Speeds • Suction Specific Speed • Best Efficiency Point • Affinity Laws |
| 1045 – 1130 | Centrifugal Pump Design Balancing Disc • Impeller NPSHR • Impeller Centre-Rib • Mechanical Seals • Velocity Head |
| 1130 – 1230 | Pump Sales Affinity Laws • Pump Software • Suction Lift • Viscosity • Re-Rate/Retrofit • Head-Rise • Radial/Horizontal Split Case |
| 1230 – 1245 | Break |
| 1245 – 1330 | Centrifugal Pump Installation Foundation • Soft Foot • Suction Pipe • Suction Strainer |
| 1330 – 1420 | VIDEO: Fundamentals of Pump Performance 2 Discussion Forum |
| 1420 – 1430 | Recap Using this Course Overview, the Instructor(s) will Brief Participants about the Topics that were Discussed Today and Advise Them of the Topics to be Discussed Tomorrow |
| 1430 | Lunch & End of Day Three |



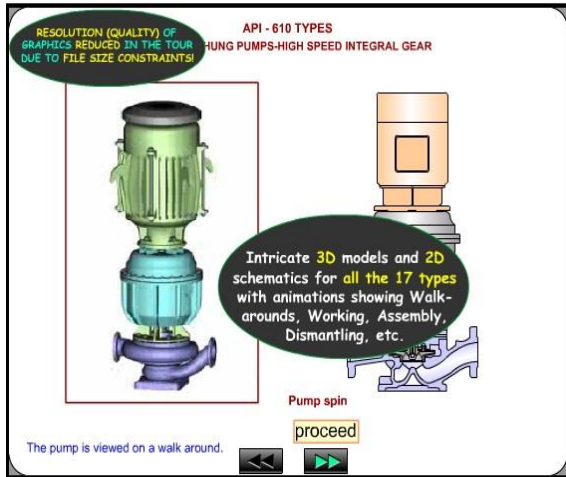
Day 4

| | |
|-------------|---|
| 0730 – 0800 | Centrifugal Pump Operation Start-Up • Minimum Flow • Maximum Pump RPM • Motor Amps/Specific Gravity • Entrained Gas • Operation at Shut Off • Temperature-Rise • Thermal Shock |
| 0800 – 0830 | Centrifugal Pump Maintenance Case Gasket • Checking for Wear Clearance • Oil Change • Storage |
| 0830 – 0900 | Centrifugal Pump Re-Rate/Retrofit Impeller Cut • NPSH • De-Staging • Electric Motor Sizing • Viscosity Changes |
| 0900 – 0930 | VIDEO: Hydraulic Loads, Critical Speed & Torque Discussion Forum |
| 0930 – 0945 | Break |
| 0945 – 1030 | Centrifugal Pump Troubleshooting Bearing Failures • Bearing Housing Oil Leakage • Cavitation Noise and Damage • Impeller Cavitation/Erosion • Vibration • Cracked Volute Tongues • NPSH • Viscosity Effects |
| 1030 – 1130 | VIDEO: Bearings, Seals & Couplings |
| 1130 – 1230 | Group Discussions |
| 1230 – 1245 | Break |
| 1245 – 1345 | VIDEO: Special Pump Topics & Final Discussion |
| 1345 – 1400 | Course Conclusion Using this Course Overview, the Instructor(s) will Brief Participants about the Course Topics that were Covered During the Course |
| 1400 – 1415 | POST-TEST |
| 1415 – 1430 | Presentation of Course Certificates |
| 1430 | Lunch & End of Course |

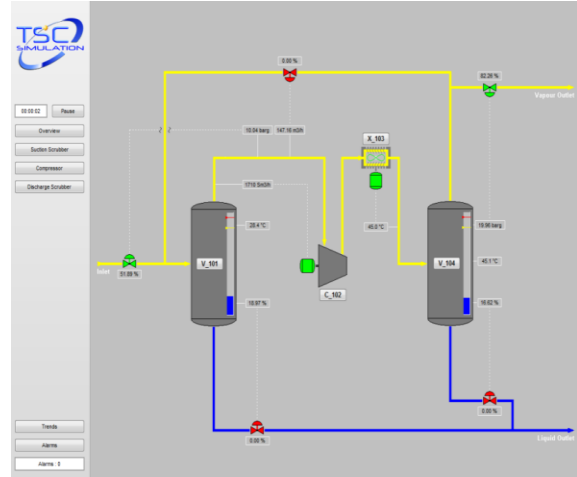


Simulator (Hands-on Practical Sessions)

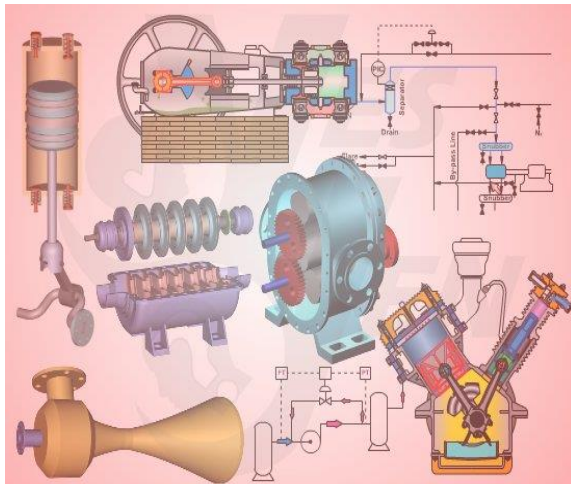
Hands-on practical sessions will be arranged for all participants throughout the course duration using “Centrifugal Pumps and Troubleshooting Guide 3.0”, “SIM 3300 Centrifugal Compressor Simulator”, “CBT on Compressors” and “Steam Turbine & Governing System CBT” simulators.



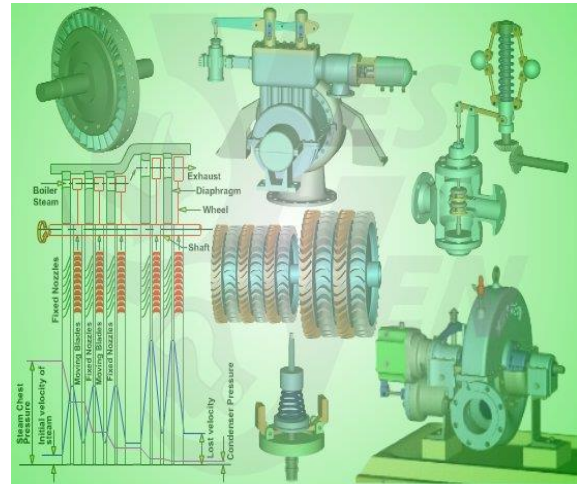
Centrifugal Pumps and Troubleshooting Guide 3.0



SIM 3300 Centrifugal Compressor Simulator



CBT on Compressors



Steam Turbine & Governing System CBT

Course Coordinator

Mari Nakintu, Tel: +971 2 30 91 714, Email: mari1@haward.org